

Sample Name:

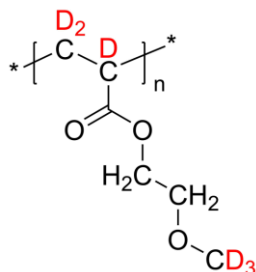
**Deuterated Poly(2-methoxyethyl acrylate-d6)**

**or**

**Deuterated Poly(d6-Methoxy ethylene glycol-acrylate)**

Sample #: **P43733-d6MeOEA**

**Structure:**



**Composition:**

Mn x 10 <sup>3</sup>	PDI
7.0	1.38

Color: Honey Like
D% > 98%

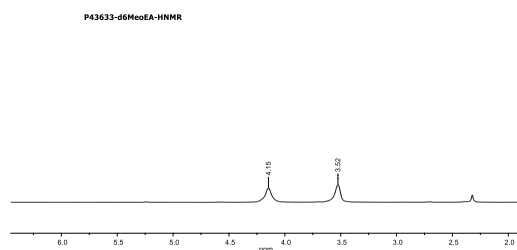
**Synthesis Procedure:**

The polymer was synthesized by anionic polymerization process.

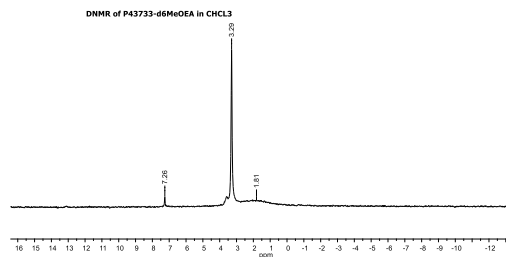
**Characterization:**

The product was characterized by size exclusion chromatography (SEC) and <sup>1</sup>H NMR data analysis.

**<sup>1</sup>H-NMR spectrum of the polymer:**



**D-NMR spectrum of the monomer:**



**SEC elugram of Homopolymer:**

