

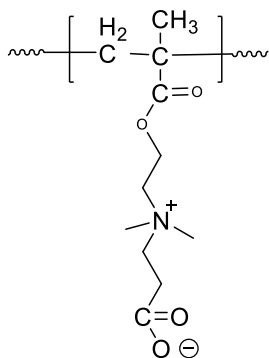
Sample Name:

Poly(carboxybetaine methacrylate)

(CBMA) based on (N,N-dimethylaminoethyl methacrylate)

Sample #: **P43944-CBMA**

Structure:



Composition:

Mn × 10 ³	PDI
50.0	1.02

Synthesis Procedure:

The polymer was synthesized by RAFT polymerization process.

Characterization:

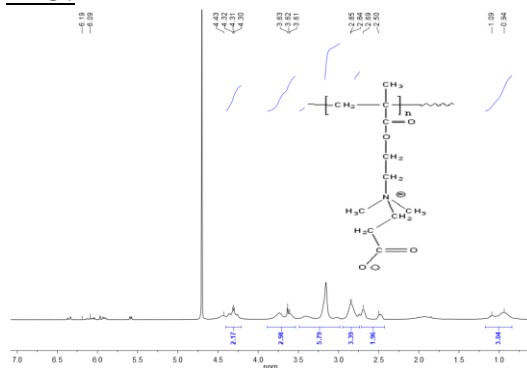
The product was characterized by size exclusion chromatography (SEC) and ¹H NMR data analysis.

Solubility:

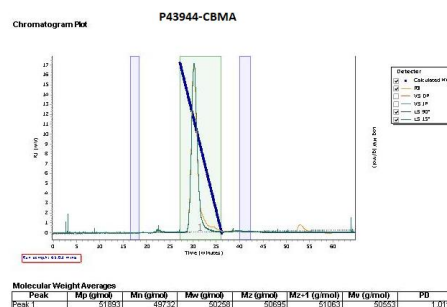
Polymer is soluble in water.

HNMR spectrum of the polymer run in

D2O:



SEC elugram of Homopolymer:



Peak	Mp (g/mol)	Mn (g/mol)	Mw (g/mol)	Mz (g/mol)	Mz-1 (g/mol)	Mz (g/mol)	PDI
Peak 1	51000	30700	20000	20000	51000	20000	1.011