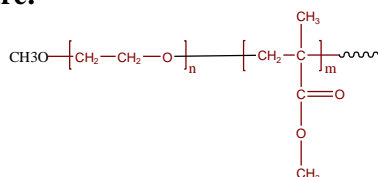


Sample Name:

Poly(ethylene oxide-b-methyl methacrylate)

Sample #: **P43919-EOMMA**

Structure:

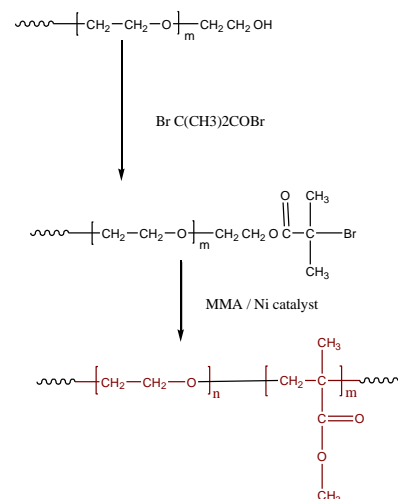


Composition:

Mn x 10 ³ PEO-b-MMA	PDI
5.0-b-7.3	1.4

Synthesis Procedure:

Poly(Ethylene oxide-methyl methacrylate) is prepared as shown in the scheme below:



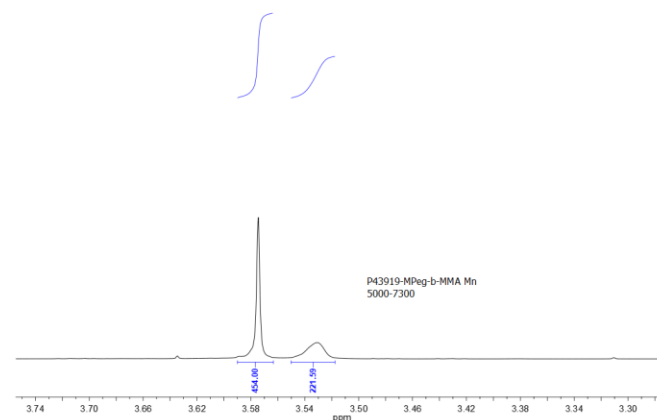
Characterization:

Polymer composition was determined by H NMR taking the integration of PEG block at 3.66 ppm and methyl ester of PMMA block at 3.62 ppm. Molecular weights of the first block and the Mw/Mn of the final and the first block was determined by SEC in THF.

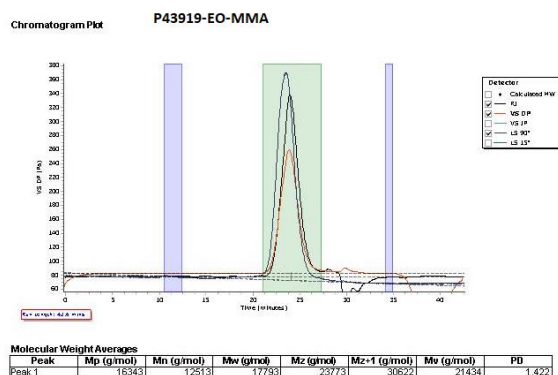
Solubility:

Poly(ethylene oxide -b- MMA) is soluble in CHCl₃, THF, toluene. The polymer precipitated out from hexane.

¹H-NMR Spectrum of the block copolymer:



SEC elugram of the block copolymer:



Peak	Mp (g/mol)	Mn (g/mol)	Mw (g/mol)	Mz (g/mol)	Mz-1 (g/mol)	Mv (g/mol)	PDI
Peak 1	16343	12513	17793	23773	30622	21434	1.422

