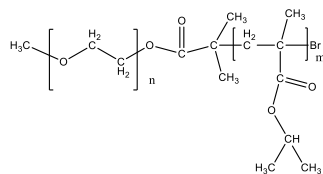


**Sample Name:** Poly(ethylene oxide)-b-Poly(isopropyl methacrylate)

**Sample #:** P43941A-EOisoPrMA

**Structure:**

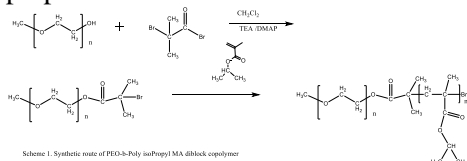


**Composition:**

Mn x 10 <sup>3</sup>	PDI
PEO-b-IsoPrMA	
5.0-b-6.5	1.25

**Synthesis Procedure:**

Poly(Ethylene oxide- isopropyl methacrylate) is prepared as shown in the scheme below:



Scheme 1. Synthetic route of PEO-b-Poly(isopropyl methacrylate) diblock copolymer

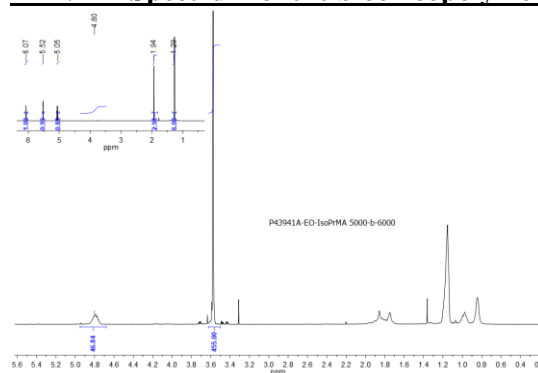
**Characterization:**

Polymer composition was determined by <sup>1</sup>H NMR taking the integration of PEG block at 3.66 ppm and methyl ester of PMMA block at 3.62 ppm. Molecular weights of the first block and the Mw/Mn of the final and the first block was determined by SEC in THF.

**Solubility:**

Poly(ethylene oxide -b- isoPrMA) is soluble in CHCl<sub>3</sub>, THF, toluene. The polymer precipitated out from hexane.

**<sup>1</sup>H-NMR Spectrum of the block copolymer:**



**SEC elugram of the block copolymer:**

