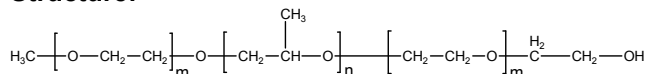


Sample Name:

Poly(ethylene oxide-b- propylene oxide -b-ethylene oxide)

Sample #: P11190C-EOPOEO**Structure:****Composition:**

| Mn x 10 ³ | PDI |
|----------------------|------|
| 0.44-b-1.8-b-0.3 | 1.09 |
| Dp: 10-b-31-b-7 | |

Synthesis Procedure:

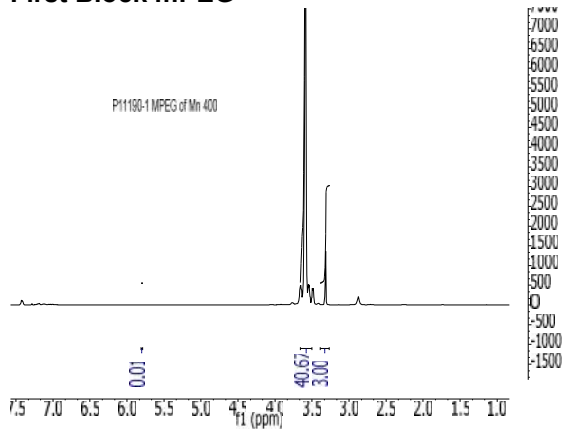
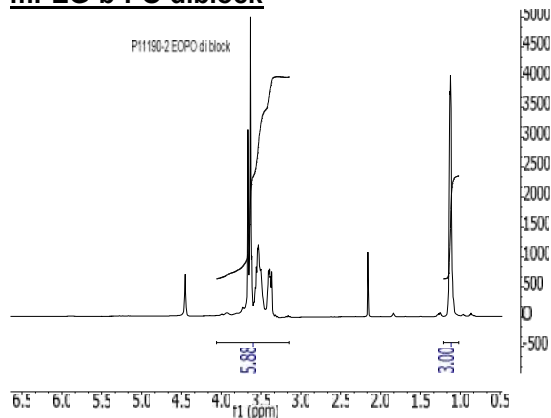
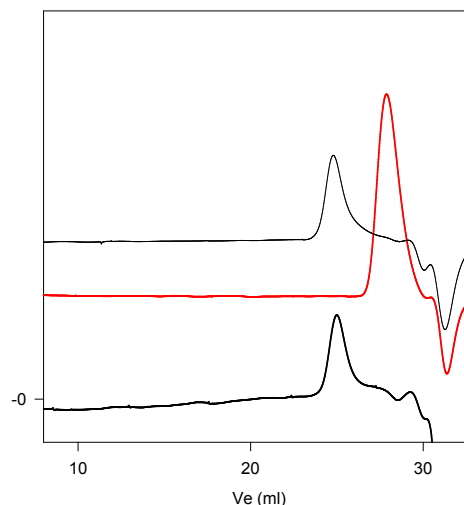
Poly(ethylene oxide-b-propylene oxide-b-ethylene oxide) is prepared by living anionic polymerization with sequence addition of monomer EO and propylene oxide.

Characterization:

The molecular weight and polydispersity index of this polymer were determined by size exclusion chromatography (SEC) using a Varian liquid chromatograph equipped with a UV and refractive index detector.

Solubility:

Polymer is soluble in THF, CHCl₃, and toluene.

First Block mPEG**mPEG-b-PO diblock****Triblock EOPOEO****P11190C-EOPOEO**

Size exclusion chromatography of the product:

- Poly(ethylene glycol methylether) : $M_n=440$, $M_w=480$, $M_w/M_n=1.09$
- Poly(ethylene glycol methylether-b-PO) : $M_n=440-1800$ $M_w/M_n=1.09$
- Poly(ethylene glycol methylether-b-PO-b-EO) : $M_n=440-1800-300$ $M_w/M_n=1.09$