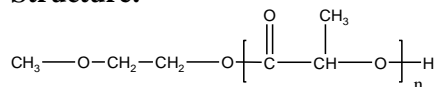


Sample Name: Poly(L-lactide)

Sample #: P44428-LA (L-form)

Structure:

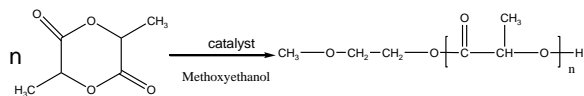


Composition:

$M_n \times 10^3$	PDI
2.0	1.09

Synthesis Procedure:

The polymerization of 3, 6-dimethyl-1,4-dioxane-2,5-dione was initiated with an catalyst and the reaction was carried out in THF.



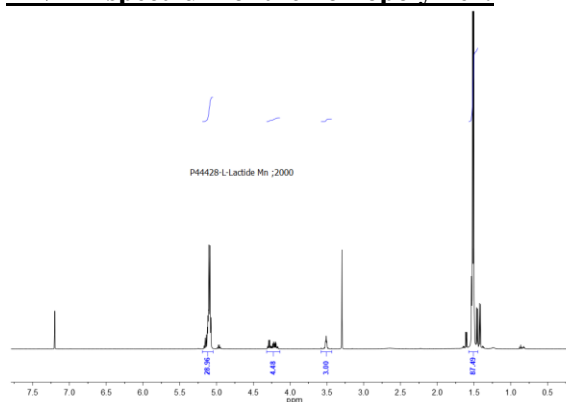
Characterization:

The molecular weight is calculated from NMR by comparing methane proton of lactide at 5.1ppm and methoxyethanol proton at 3.4 and polydispersity index (PDI) is obtained by size exclusion chromatography.

Solubility:

Poly lactide is soluble in toluene, THF, CHCl_3 and CH_2Cl_2 . The polymer is insoluble in methanol, hexane, and ether.

HNMR spectrum of the homopolymer:



SEC elugram of Homopolymer:

