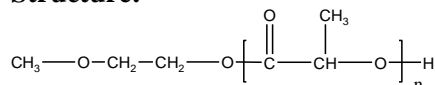


Sample Name: Poly(L-lactide)

Sample #: P44432-LA (L-form)

**Structure:**

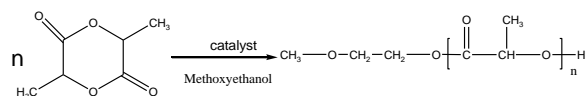


**Composition:**

$M_n \times 10^3$	PDI
8.0	1.4

**Synthesis Procedure:**

The polymerization of 3, 6-dimethyl-1,4-dioxane-2,5-dione was initiated with an catalyst and the reaction was carried out in THF.



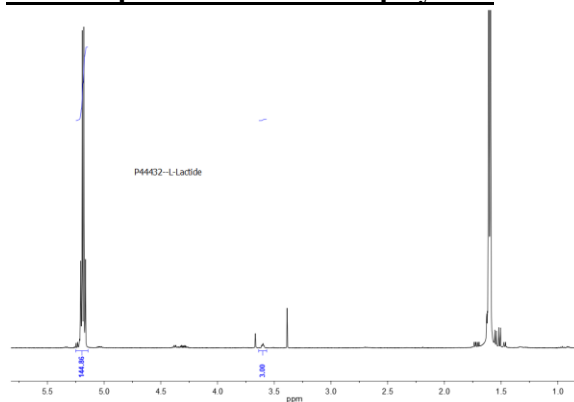
**Characterization:**

The molecular weight is calculated from NMR by comparing methane proton of lactide at 5.1ppm and methoxyethanol proton at 3.4 and polydispersity index (PDI) is obtained by size exclusion chromatography.

**Solubility:**

Poly lactide is soluble in toluene, THF,  $\text{CHCl}_3$  and  $\text{CH}_2\text{Cl}_2$ . The polymer is insoluble in methanol, hexane, and ether.

**HNMR spectrum of the homopolymer:**



**SEC elugram of Homopolymer:**

