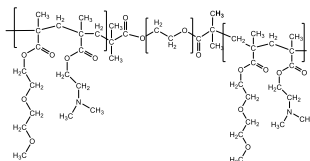


Sample Name: Poly (Diethylene glycol methylethermethacrylate-co-[N,N-dimethylamino]ethyl methacrylate)-b-Poly ethylene glycol-b- Poly(Diethylene glycol methylethermethacrylate-co-[N,N-dimethylamino]ethyl methacrylate)

Sample #: P43856A-DEGMEOMA-DMAEMA-b-PEG-DEGMEOMA-DMAEMA

Structure:



Composition:

Mn × 10 ³ PEG Block	Mn × 10 ³ total	Mw/Mn
20	36	1.8
Feed mole DEG-MeOMA 0.180 mole DMAEMA 0.064 mole PEG central Block 0.5 mole		
DEG-MEOMA(27)-DMAEMA(25)- PEG(454)-DEG-MEOMA(27)-DMAEMA(25)		

Synthesis Procedure:

The polymer is prepared by ATRP process using α - ω -dibromo PEG.

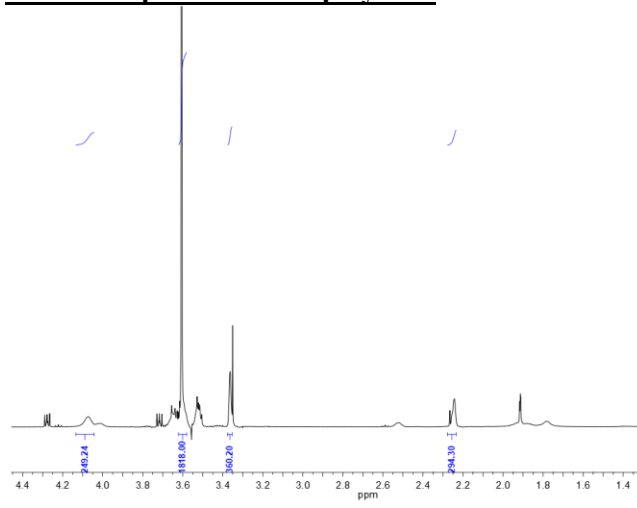
Characterization:

The molecular weight and polydispersity index (PDI) were calculated by SEC using water as eluent. The copolymer composition was calculated from ¹H-NMR spectroscopy. **Polymer might contain some HomoPEO to be removed from Acetone-Hexane mixture.**

Solubility:

The polymer is soluble in water. 1mg polymer in Water does not give a clear solution. After heating solution to about 40 °C by bubbling CO₂, it gives clear solution immediately.

¹H-NMR Spectrum of Copolymer:



SEC of the random copolymer

