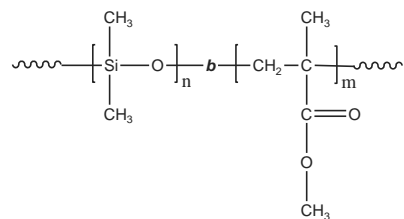


Sample Name: Poly(dimethylsiloxane-b- NN-Dimethyl amino ethylmethacrylate)

Sample #: P11256-DMSDMAEMA



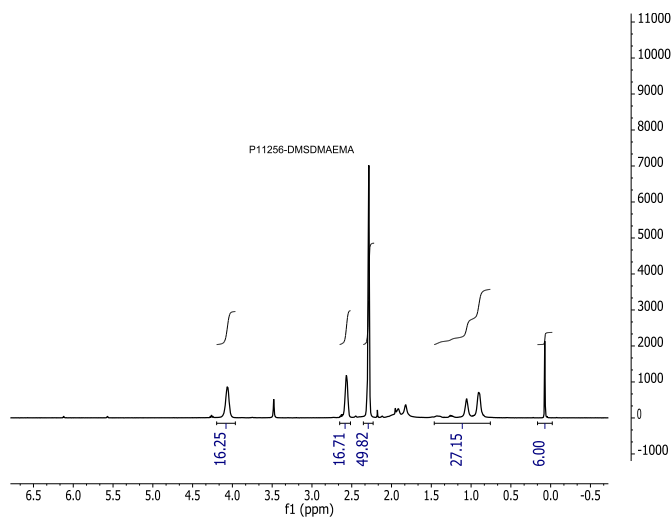
Composition:

Mn x 10 ³ DMS-DMAEMA	Mw/Mn (PDI)
10.0-b-170.0	1.45

Characterization:

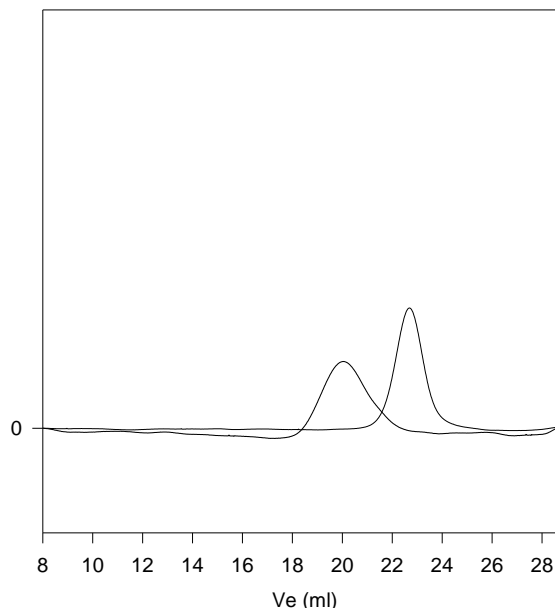
Polymer was analyzed by size exclusion chromatography (SEC) to obtain the molecular weight and polydispersity index (PDI). The final block copolymer composition was calculated from ¹H NMR spectroscopy by comparing the peak area of the dimethyl siloxane protons near 0.08 ppm with the methylene protons 4.0 ppm. Block copolymer PDI is determined by SEC.

¹H NMR spectrum of the polymer:



SEC profile of the block copolymer:

P11256-DMSDMAEMA



— Polydimethylsiloxane $M_n=10000$, $M_w=10500$, $PI=1.05$
 — Block Copolymer PDMS(10,000)-b-PDMAEMA(170,000), $PI=1.45$
 composition from H NMR