

Product Profile

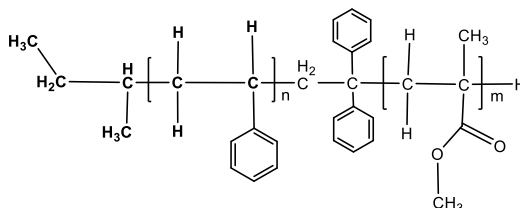
Identification

Product Name: Poly(styrene-b-methylmethacrylate)

Product Lot Number: P6404-R-SMMA

CAS #: 25034-86-0

Product Chemical Architecture:



Composition:

| | |
|-------------------------------------|--------------------------|
| Composition (S-b-MMA) | 73,000-b-54,000 |
| MMA mole% | 42.7 |
| Tacticity (atac, iso, syn) | PMMA > 78% syn |
| Mn (g/mole) | 127,000 |
| Mw (g/mole) | 129,000 |
| Mw/Mn | 1.02 |
| dn/dc (mL/g) in THF at 30 °C | 0.144 |

Method of Synthesis

The polymer is synthesized by anionic polymerization process.

Solubility in different solvents:

| | | | |
|---------|------------------------|-------------------|---|
| THF | √ | DMF | √ |
| Alcohol | X | CHCl ₃ | √ |
| Toluene | Depends on composition | Water | X |

Validation of Architecture

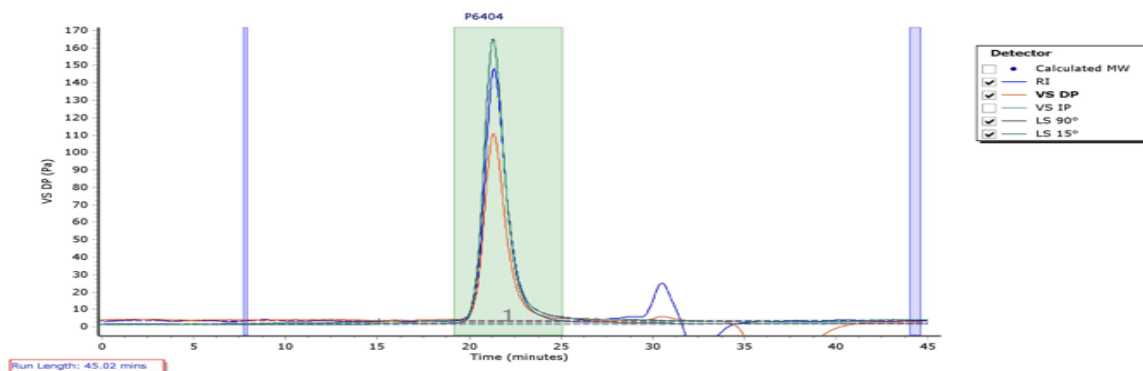
A. Gel Permeation Chromatography (GPC), SEC Profile:

Molecular weights were determined by Agilent Technologie 1260 Infinity II GPC/SEC System equipped with Triple detector (RI, Viscometer, RALS 90° and LS 15°) and three columns (PLgel, 7.5x300 mm, 5µm-10µm, 10⁵-10⁶Å). THF (stabilized BHT) with 1%(v/v%) TEA was the eluent. The flow rate was 1.0 ml/min.



P6404

Chromatogram Plot



Molecular Weight Averages

| Peak | Mp (g/mol) | Mn (g/mol) | Mw (g/mol) | Mz (g/mol) | Mz+1 (g/mol) | Mv (g/mol) | PD |
|--------|------------|------------|------------|------------|--------------|------------|-------|
| Peak 1 | 133624 | 127122 | 129110 | 130853 | 132408 | 130579 | 1.016 |

B. NMR (¹H NMR) of SMMA

SMMA sample was dissolved in CDCl₃. ¹H NMR spectra was determined using a 500 MHz. Bruker Avance III spectrometer.

