

## Product Profile

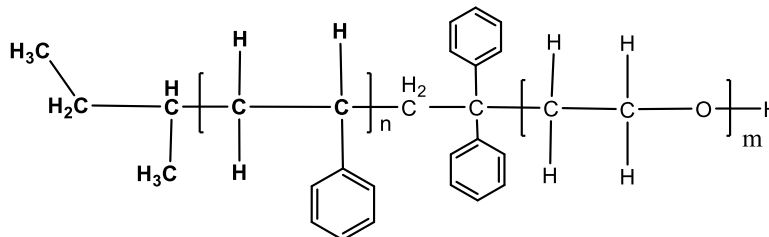
### Identification

**Product Name:** Poly(styrene-b-ethylene oxide)

**Product Lot Number:** P44726-SEO

**CAS #:** Not Available

**Product Chemical Architecture:**



**Composition:**

Composition (S-b-EO)	407,000-b-20,000
EO mole%	4.7
Mn (g/mole)	427,000
Mw (g/mole)	436,000
Mw/Mn	1.02
dn/dc (mL/g) in THF at 30 °C	0.175

### Method of Synthesis

The polymer is synthesized by anionic polymerization process.

**Solubility in different solvents:**

THF	√	DMF	√
Alcohol	X	CHCl <sub>3</sub>	√
Toluene	√	Water	X

### Validation of Architecture

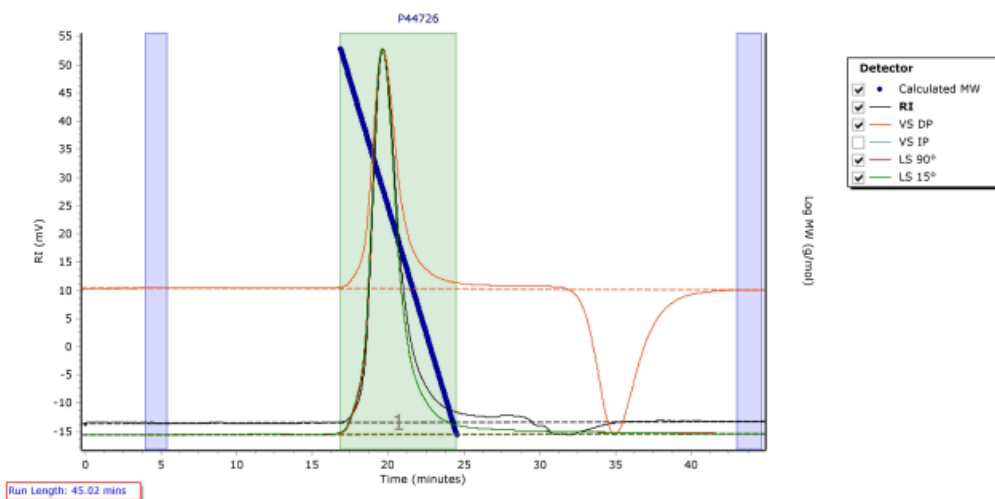
#### A. Gel Permeation Chromatography (GPC), SEC Profile:

Molecular weights were determined by Agilent Technologie 1260 Infinity II GPC/SEC System equipped with Triple detector (RI, Viscometer, RALS 90° and LS 15°) and three columns (PLgel, 7.5x300 mm, 5µm-10µm, 10<sup>5</sup>-10<sup>6</sup>Å). THF (stabilized BHT) with 1%(v/v%) TEA was the eluent. The flow rate was 1.0 ml/min.



P44726

Chromatogram Plot



Molecular Weight Averages

Peak	Mp (g/mol)	Mn (g/mol)	Mw (g/mol)	Mz (g/mol)	Mz+1 (g/mol)	Mv (g/mol)	PD
Peak 1	457783	427012	435955	443834	450855	442533	1.021

## B. NMR (<sup>1</sup>H NMR) of SMMA

SMMA sample was dissolved in CDCl<sub>3</sub>. <sup>1</sup>H NMR spectra was determined using a 500 MHz. Bruker Avance III spectrometer.

