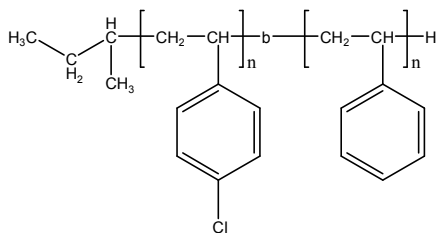


**Sample Name:** Poly(4-Chlorostyrene-b-Styrene)

**Sample #:** P11305A-4CISS

**Structure:**



**Composition:**

$M_n \times 10^3$ 4-ClS-b-S	$M_w/M_n$ (PDI)
25.0-b-80.0	1.6

**Synthesis Procedure:**

By anionic polymerization

**Characterization:**

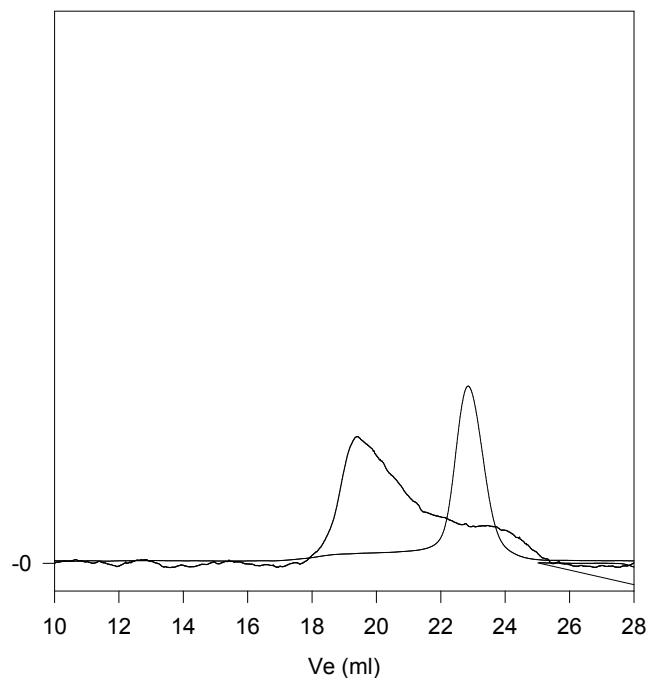
Polymer analyzed by size exclusion chromatography (SEC) to obtain the molecular weight and polydispersity index (PDI).

**Solubility:**

Polymer is soluble in THF, Chloroform, DMF, and precipitated in methanol and hexanes.

SEC profile of the block copolymer:

**P11305A-4CISS**



Size Exclusion Chromatograph of Poly(4-Chlorostyrene)

$M_n=25,000$ ,  $M_w=32,000$ ,  $M_w/M_n=1.25$

4ClS-b-S:  $M_n$  : 25,000-b-80,000  $M_w/M_n$  : 1.6