



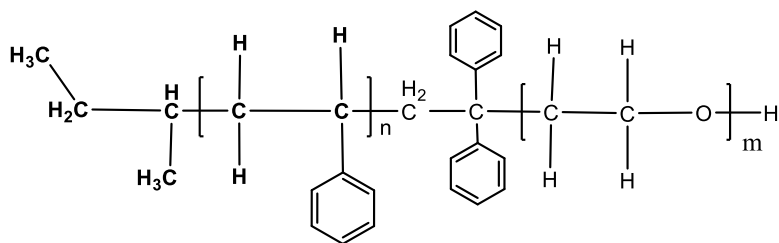
Product Profile

Identification

Product Name: Poly(styrene-b-ethylene oxide)

Product Lot Number: P44812-SEO

CAS #: Not Available **Product Chemical Architecture:**



Composition:

Composition (S-b-EO)	11,500-b-49,500
EO mole%	81
Mn (g/mole)	61,000
Mw (g/mole)	61,000
Mw/Mn	1.00
dn/dc (mL/g) in THF at 30 °C	0.090

Method of Synthesis

The polymer is synthesized by anionic polymerization process.

Solubility in different solvents:

THF	√	DMF	√
Alcohol	X	CHCl ₃	√
Toluene	√	Water	X

Validation of Architecture

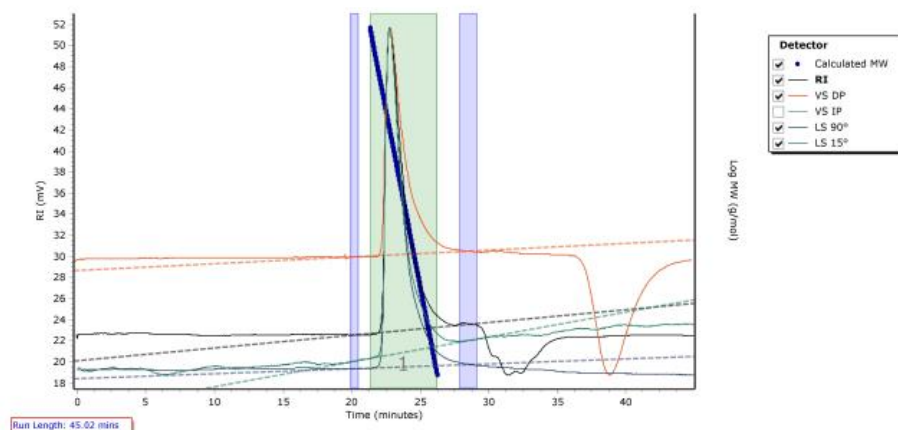
A. Gel Permeation Chromatography (GPC), SEC Profile:

Molecular weights were determined by Agilent Technologie 1260 Infinity II GPC/SEC System equipped with Triple detector (RI, Viscometer, RALS 90° and LS 15°) and three columns (PLgel, 7.5x300 mm, 5μm-10μm, 10⁵-10⁶Å). THF (stabilized BHT) with 1%(v/v%) TEA was the eluent. The flow rate was 1.0 ml/min.



Chromatogram Plot

P44812



Molecular Weight Averages

Peak	Mp (g/mol)	Mn (g/mol)	Mw (g/mol)	Mz (g/mol)	Mz+1 (g/mol)	Mv (g/mol)	PD
Peak 1	62015	60638	60685	60731	60776	60711	1.001

B. NMR (H¹NMR) of SMMA

SMMA sample was dissolved in CDCl₃. ¹H NMR spectra was determined using a 500 MHz. Bruker Avance III spectrometer.

