

Product Profile

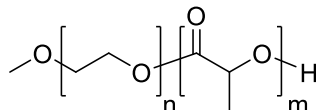
Identification

Product Name: Poly(ethylene oxide-b-lactide)

Product Lot Number: P5483B-R-EOLA

CAS #: Not Available

Product Chemical Architecture:



Composition:

Composition (EO-b-LA)	5,000-b-15,000
EO mole%	25
Mw (g/mole)	20,000
Mw/Mn	1.00
dn/dc (mL/g) in THF at 30 °C	0.021

Method of Synthesis

The polymer is synthesized by anionic polymerization and coordination polymerization processes.

Solubility in different solvents:

THF	√	DMF	√
Alcohol	X	CHCl₃	√
Toluene-Hot	√	Water	X

Validation of Architecture

A. Gel Permeation Chromatography (GPC), SEC Profile:

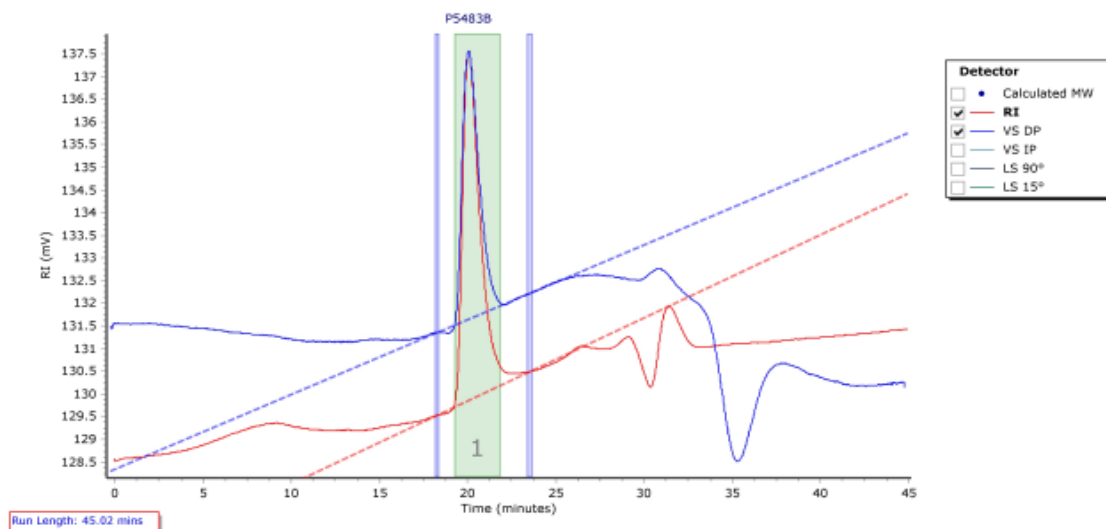
Molecular weights were determined by Agilent Technologie 1260 Infinity II GPC/SEC System equipped with Triple detector (RI, Viscometer, RALS 90° and LS 15°) and three columns (PLgel, 7.5x300 mm, 5µm-10µm, 10⁵-10⁶Å). THF (stabilized BHT) with 1%(v/v%) TEA was the eluent. The flow rate was 1.0 ml/min.



Polymer Source,™ Inc.

P5483B

Chromatogram Plot

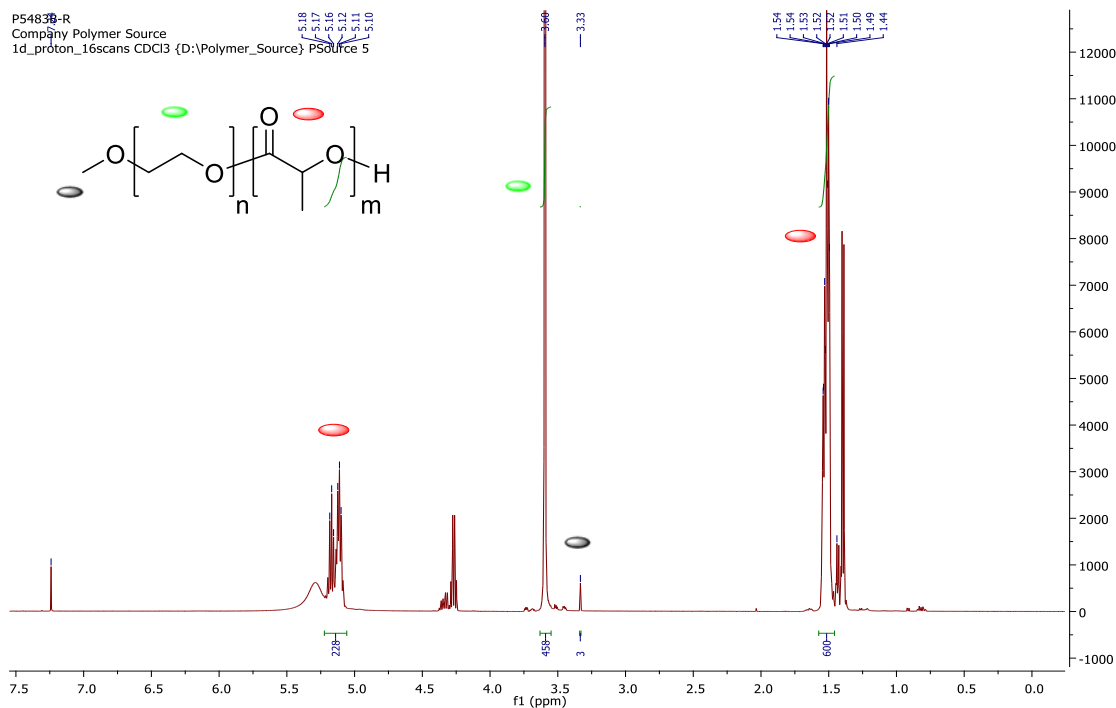


Molecular Weight Averages

Peak	Mp (g/mol)	Mn (g/mol)	Mw (g/mol)	Mz (g/mol)	Mz+1 (g/mol)	Mv (g/mol)	PD
Peak 1	20360	19889	19924	19958	19990	19942	1.002

B. NMR (¹H NMR) of EOLA

EOLA sample was dissolved in CDCl₃. ¹H NMR spectra was determined using a 500 MHz. Bruker Avance III spectrometer.



124 avenue Avro, Dorval (Montreal)
Quebec H9P 2X8 Canada
Phone : +1-514-421-5517 or +1-514-421-5506
support@polymersource.com
www.polymersource.ca