

**Sample Name:** Poly (Styrene), RAFT-agent terminated

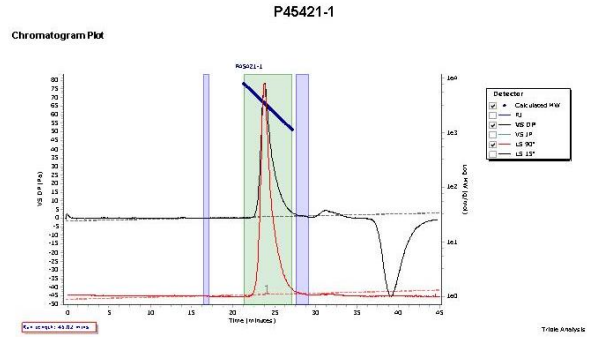
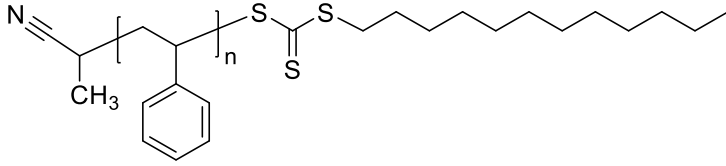
**SEC elugram of the Sample:**

**Sample #:** P45421B-SRAFT

Agilent GPC/SEC Software



**Structure:**



**Composition:**

$M_n \times 10^3$	PDI
3.0	1.08

Molecular Weight Averages

Peak	Mp (g/mol)	Mn (g/mol)	Mw (g/mol)	Mz (g/mol)	Mz+1 (g/mol)	Mv (g/mol)	PD
Peak 1	3455	2785	3015	3205	3365	3722	1.082

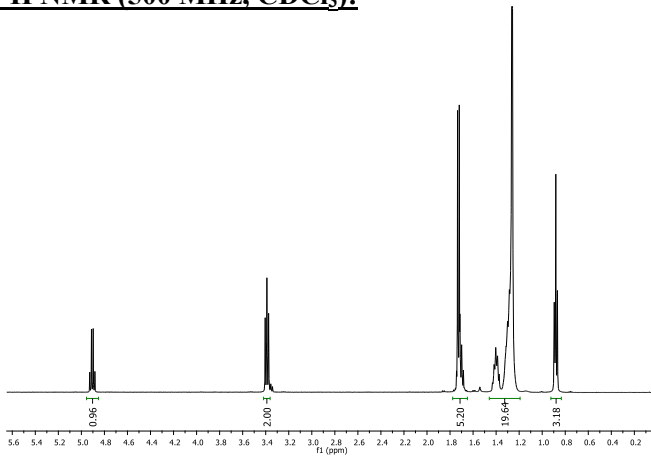
**Synthesis Procedure:**

The polymer is prepared by RAFT polymerization process using following RAFT reagent:

**Structure:**

Molecular formula	C16H29NS3
Molecular weight	331.15
Purity:	> 95 %

**<sup>1</sup>H NMR (500 MHz, CDCl<sub>3</sub>):**



**Characterization:**

The molecular weight and polydispersity index (PDI) of the polymer are obtained by size exclusion chromatography (SEC) in DMF as eluent.