

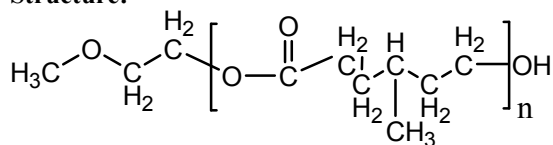
Sample Name: Poly( $\gamma$ -methyl  $\epsilon$ -caprolactone)

SEC profile of the block copolymer

Sample #: P11364-4MeCL

**P11364-4MeCL**

**Structure:**



**Composition:**

Mn x 10 <sup>3</sup> 4MeCL	Mw/Mn (PDI)
11.0	1.4

**Characterization:**

By size exclusion chromatography (SEC) to obtain the molecular weight and polydispersity index (PDI).

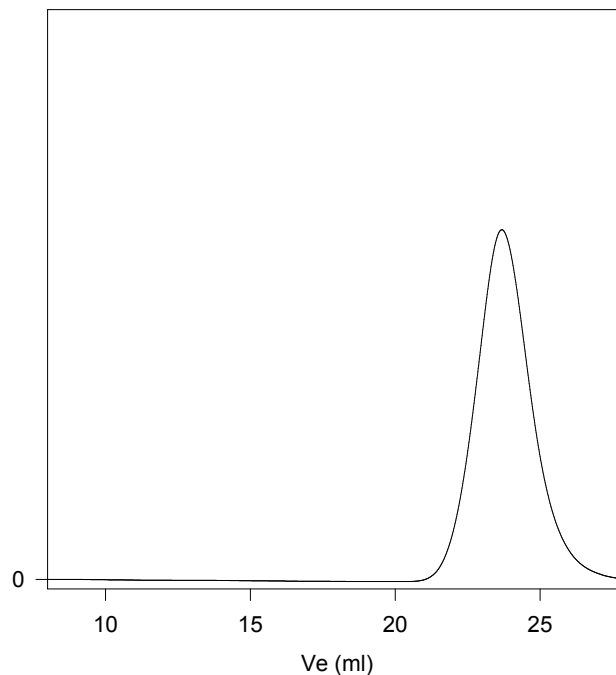
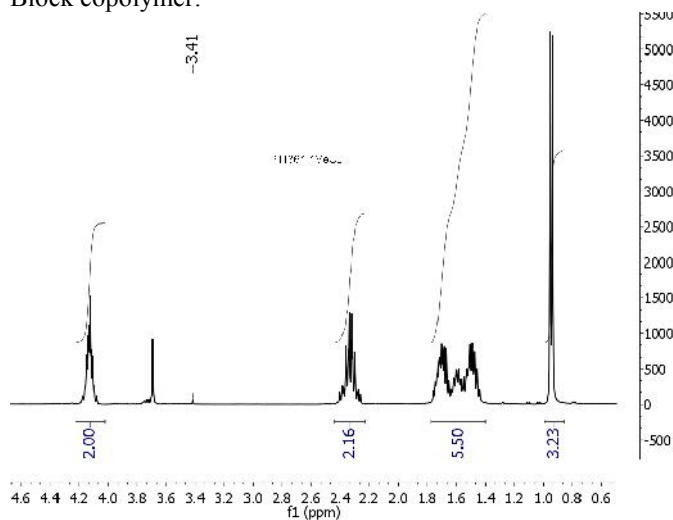
**Solubility:**

Polymer is soluble in THF, Chloroform, and precipitated in cold acetone, hexane

**<sup>1</sup>H NMR spectrum of the sample**

**Poly( $\gamma$ -methyl  $\epsilon$ -caprolactone)**

Block copolymer:



— SEC profile of Poly(4-methyl- $\epsilon$ -caprolactone):

— Poly4MeCL, M<sub>n</sub>=11,000, M<sub>w</sub>=15,500, PI=1.4