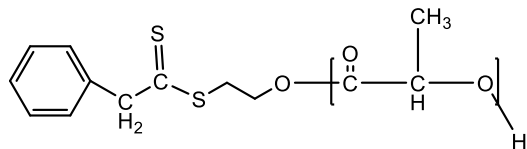


Sample Name:
Poly(lactide), ω -RAFT-terminated

Sample #: **P45556-LA-RAFT (DL-Form)**

Structure:

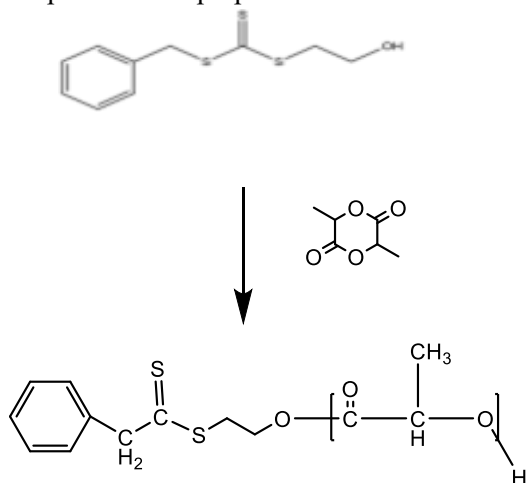


Composition:

Mn x 10 ³	PDI
4.0	1.15

Synthesis Procedure:

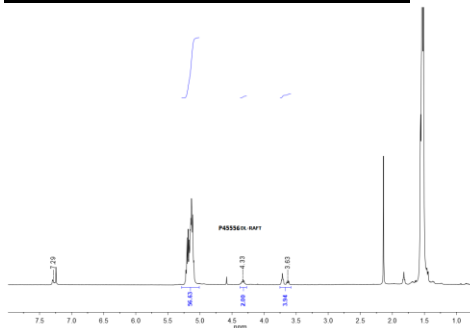
The following reaction scheme shows how the product was prepared:



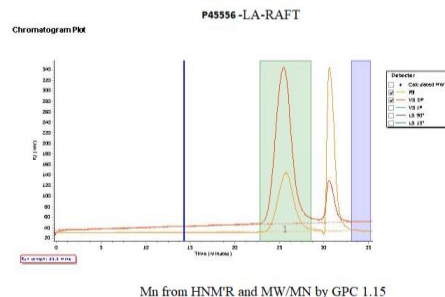
Characterization:

The product was characterized by size exclusion chromatography (SEC) and ¹H NMR data analysis.

HNMR spectrum of the Sample:



SEC elugram of the polymer:



Mn from HNMR and MW/MN by GPC 1.15