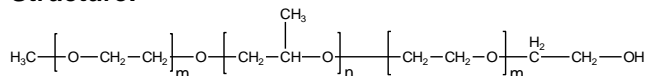


Sample Name:

Poly(ethylene oxide-b- propylene oxide -b-ethylene oxide)

Sample #: P11445-EOPOEOMA**Structure:****Composition:**

Mn x 10 ³	PDI
0.45-b-1.3-b-1.5	1.09
Dp: 10-b-21-b-34	

Synthesis Procedure:

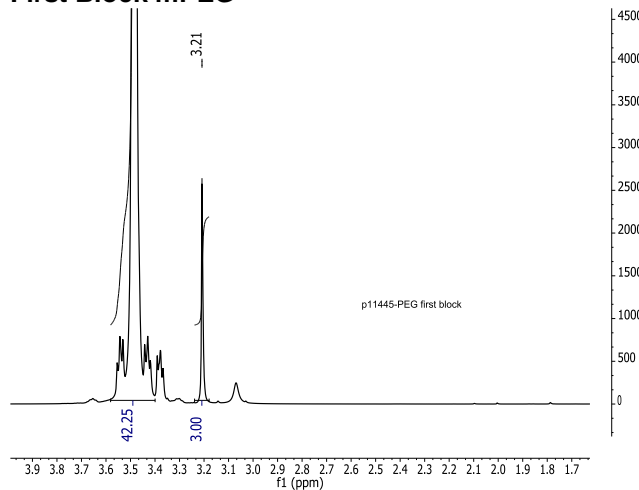
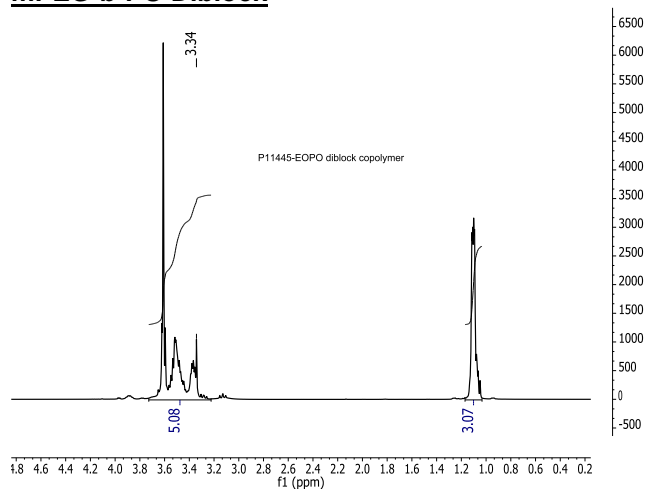
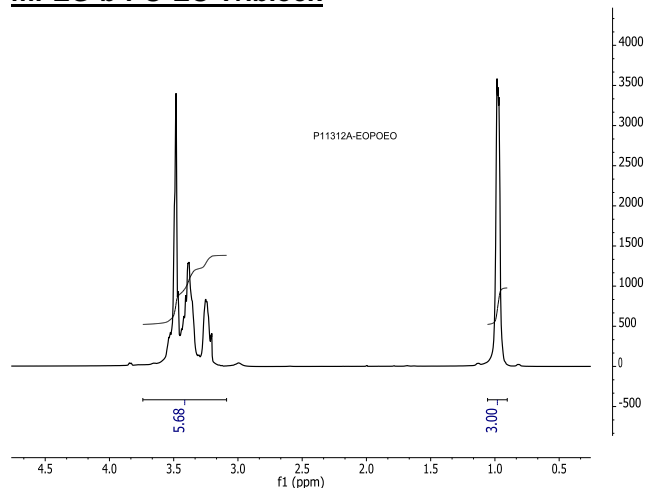
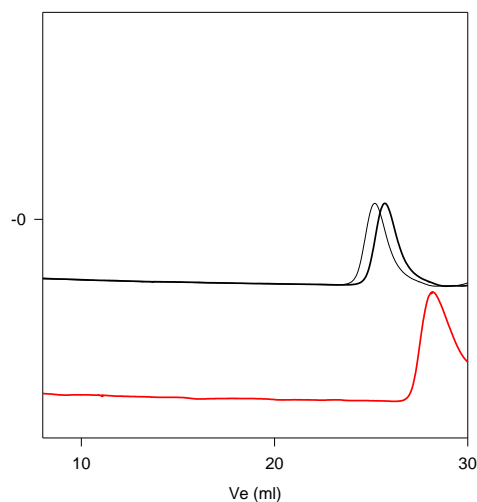
Poly(ethylene oxide-b-propylene oxide-b-ethylene oxide) is prepared by living anionic polymerization with sequence addition of monomer EO and propylene oxide.

Characterization:

The molecular weight and polydispersity index of this polymer were determined by size exclusion chromatography (SEC) using a Varian liquid chromatograph equipped with a UV and refractive index detector.

Solubility:

Polymer is soluble in THF, CHCl₃, and toluene.

First Block mPEG**mPEG-b-PO Diblock****mPEG-b-PO-EO Triblock****Triblock EOPOEO****P11445-EOPOEO**

Size exclusion chromatography of the product:

- Poly(ethylene glycol methyleher) : M_n=440, M_w=570, M_w/M_n=1.29
- Poly(ethylene glycol methyleher-b-PO) : M_n=440-1300 M_w/M_n=1.09
- Poly(ethylene glycol methyleher-b-PO-b-EO) : M_n=440-1300-1500 M_w/M_n=1.09