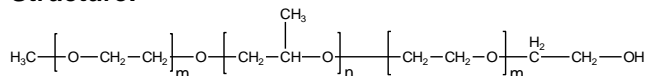


**Sample Name:**

Poly(ethylene oxide-b- propylene oxide -b-ethylene oxide)

**Sample #:** P11445A-EOPOEOMA**Structure:****Composition:**

| Mn x 10 <sup>3</sup> | PDI  |
|----------------------|------|
| 0.45-b-1.3-b-0.6     | 1.09 |
| Dp: 10-b-21-b-14     |      |

**Synthesis Procedure:**

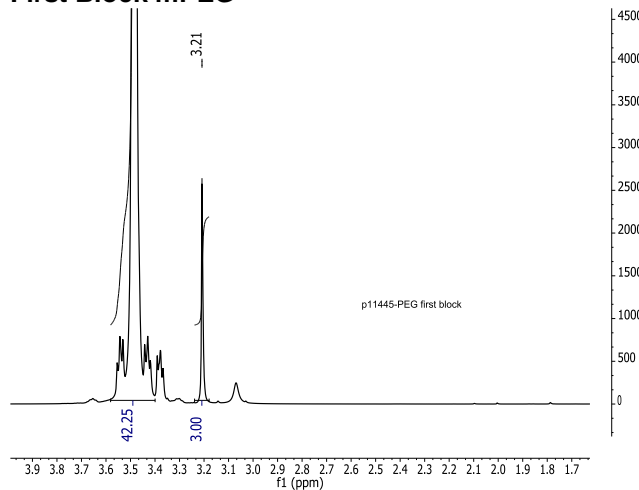
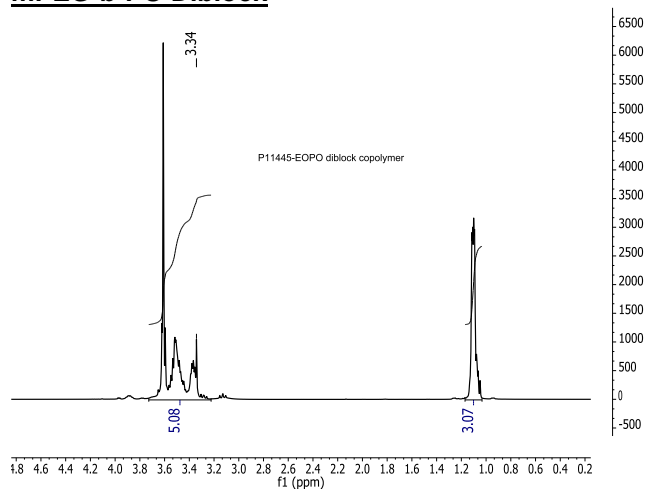
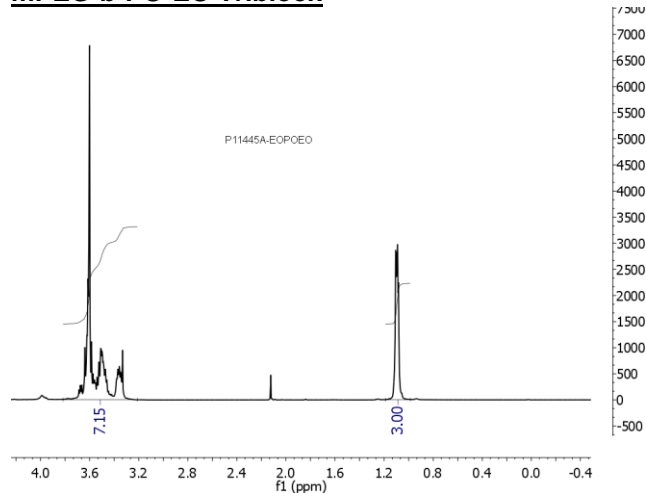
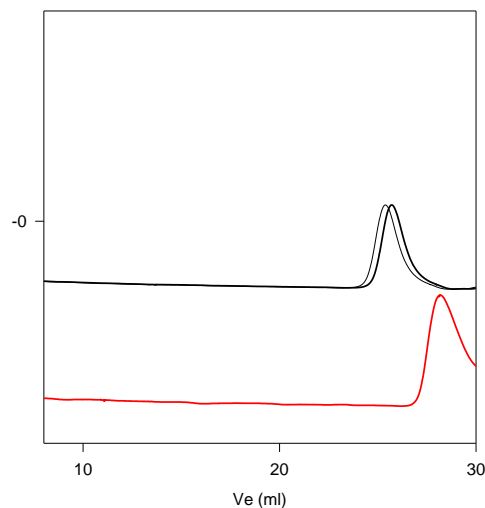
Poly(ethylene oxide-b-propylene oxide-b-ethylene oxide) is prepared by living anionic polymerization with sequence addition of monomer EO and propylene oxide.

**Characterization:**

The molecular weight and polydispersity index of this polymer were determined by size exclusion chromatography (SEC) using a Varian liquid chromatograph equipped with a UV and refractive index detector.

**Solubility:**

Polymer is soluble in THF, CHCl<sub>3</sub>, and toluene.

**First Block mPEG****mPEG-b-PO Diblock****mPEG-b-PO-EO Triblock****Triblock EOPOEO****P11445A-EOPOEO**

Size exclusion chromatography of the product:

- Poly(ethylene glycol methylether) :  $M_n=440$ ,  $M_w=570$ ,  $M_w/M_n=1.29$
- Poly(ethylene glycol methylether-b-PO) :  $M_n=440-1300$ ,  $M_w/M_n=1.09$
- Poly(ethylene glycol methylether-b-PO-b-EO) :  $M_n=440-1300-600$ ,  $M_w/M_n=1.09$