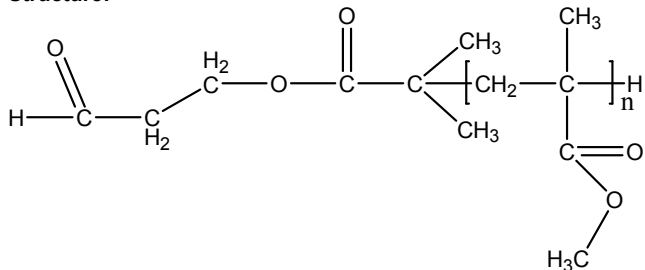


**Sample Name:**  
**Propionaldehyde Terminated Poly methylmethacrylate**

**Sample #: P14193B- MMA-CHO**

**Structure:**



**Composition:**

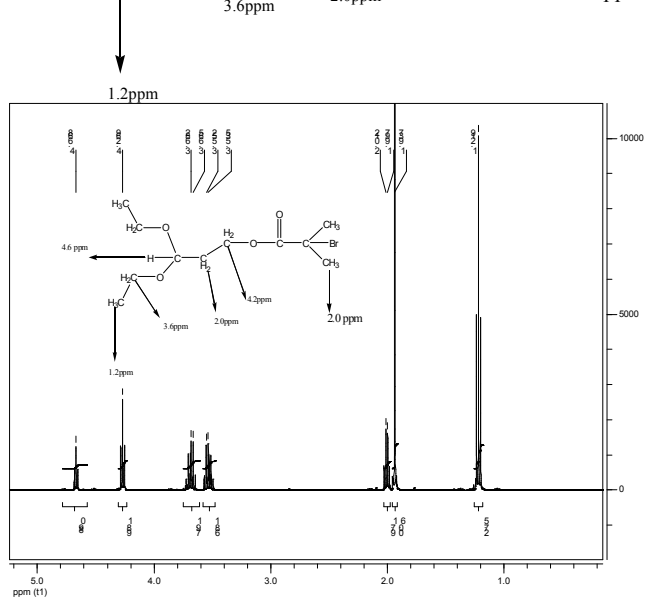
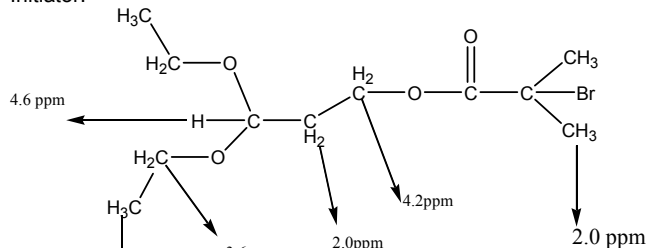
Mn x 10 <sup>3</sup>	8.3
PDI	1.4
Functionality %	73 %
Microstructure	S:H:I 58:36:6

**Characterization:**

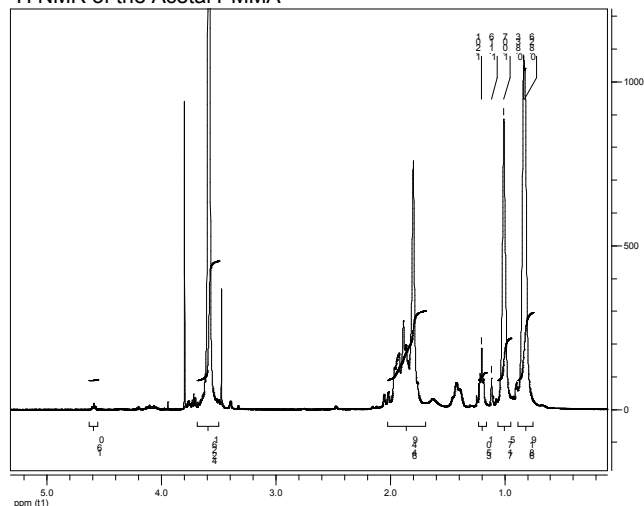
The molecular weight and polydispersity index of this polymer were determined before addition of the CO<sub>2</sub>H function, by size exclusion chromatography (SEC) using a Varian liquid chromatograph equipped with a UV and refractive index detector. Polymer functionality was determined by HNMR .

**Solubility:** Polymer is soluble in toluene, THF, CHCl<sub>3</sub> and can be precipitated in water , cold methanol.

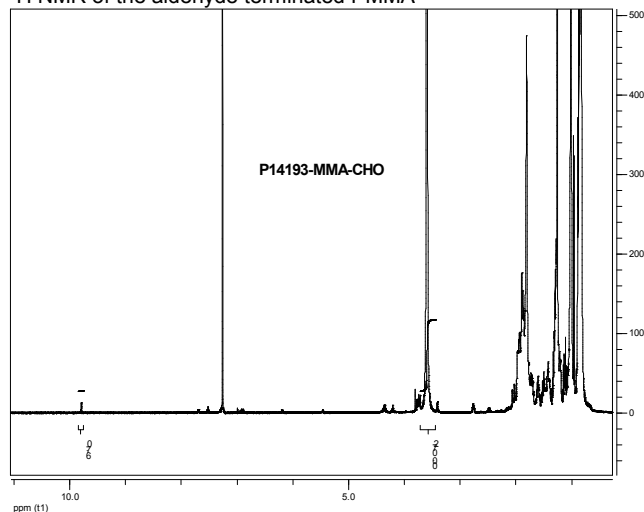
**Initiator:**



**<sup>1</sup>H NMR of the Acetal PMMA**

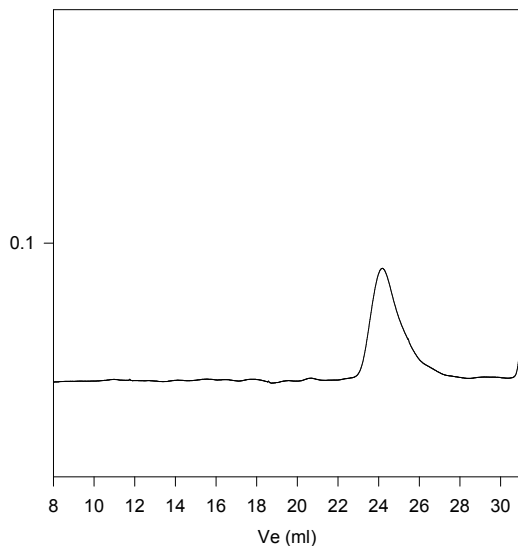


**<sup>1</sup>H NMR of the aldehyde terminated PMMA**



**SEC of Sample:**

**P14193B-MMACHO**



Size exclusion chromatography of polymer  
 — M<sub>n</sub>=8,300, M<sub>w</sub>=11,600, Mw/Mn=1.4