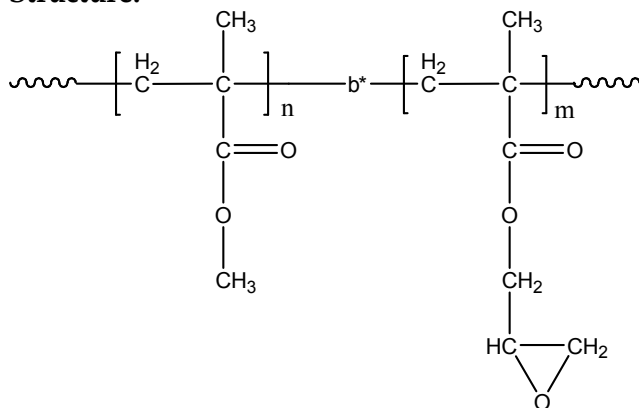


Sample Name:

Poly(Methyl methacrylate-b-Glycidyl methacrylate)

Sample #: P14430-MMAGMA

Structure:**Composition:**

Mn × 10 ³	PDI
MMA-b-GMA	
18.3-b-8.0	1.17

Synthesis Procedure:

Poly(Methyl methacrylate-b-Glycidyl methacrylate) block copolymer is synthesized by group transfer polymerization with sequential addition of methyl methacrylate and -Glycidyl methacrylate. The obtained polymer was precipitated into methanol.

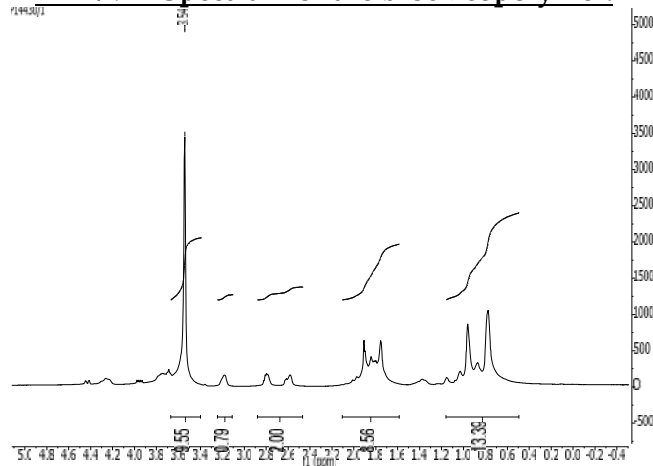
Characterization:

SEC analysis of the obtained block copolymer was carried out in THF in presence of triethyl amine as eluent and using light scattering detector to determine molecular weight and polydispersity.

The composition of block copolymer by ¹H-NMR spectroscopy in CdCl₂ by comparing methyl group in MMA block at 3.6 ppm and methylene group in GMA block at 2.8 and 2.6 ppm.

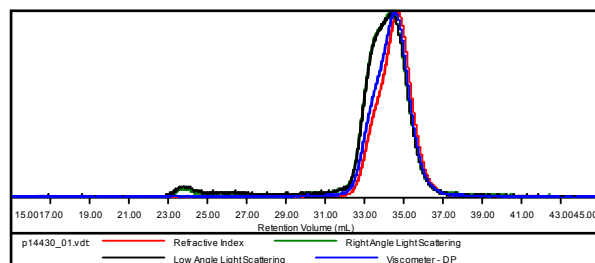
Solubility:

The block copolymer is soluble in THF and CHCl₃.

¹H-NMR Spectrum of the block copolymer:**SEC of the block copolymer:**

Sample ID: P14430-MMA-co-GMA

Concentration (mg/mL)	14.3393
Sample dn/dc (mL/g)	0.0800
Method File	PS80K-May-2013-0000.vcm
Column Set	3x PL 1113-6300
System	System 1



Sample	Mn	Mw	Mp	Mw/Mn	IV
p14430_01.vdt	26,527	31,234	23,683	1.177	0.2859

