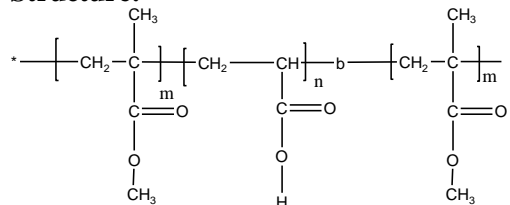


Sample Name:

Poly (methyl methacrylate -b- methacrylic acid -b- methyl methacrylate)

Sample #: **P1483- MMAMAAMMA**

Structure:

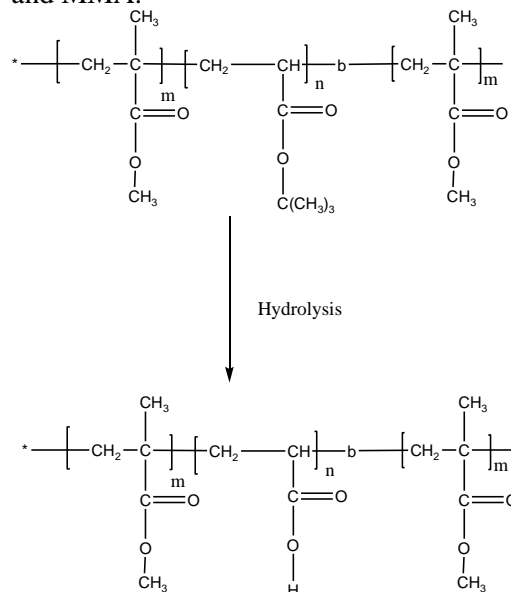


Composition:

Mn x 10 ³	PDI
1.1-b-0.7-b-0.4	1.12
Degree of polymerization of Each Block: 11-b-7-4	

Synthesis Procedure:

Poly (methyl methacrylate -b- methyl acrylic acid -b- methyl methacrylate) was prepared by living anionic polymerization with sequence addition MMA, tBuMA and MMA.

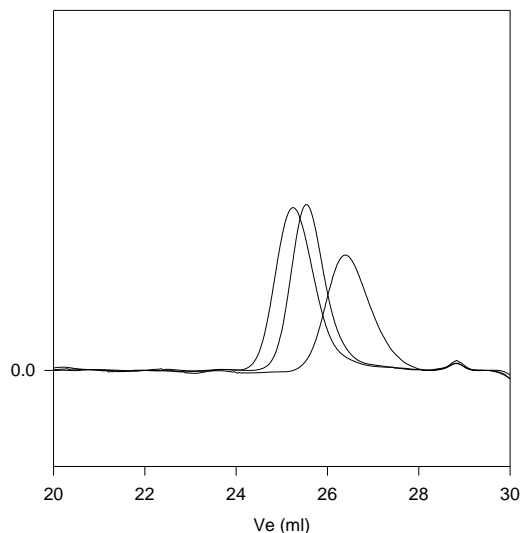


Characterization:

The molecular weight and polydispersity index of this polymer were determined by size exclusion chromatography (SEC) using a Varian liquid chromatography equipped with a UV and refractive index detector.

SEC of the Sample:

P1483-MMA-tBuMA-MMA



Size exclusion chromatography of poly(MMA-b-t.BMA-b-MMA)

— PMMA, M_n=1100, M_w=1200, (11 units by NMR), Mw/Mn=1.09

— Poly(MMA-b-t.BMA): PMMA(11 units)-b-Pt.BMA(7 units*), Mw/Mn=1.10

— Triblock copolymer: Mw/Mn=1.12

PMMA(11 units*)-b-Pt.BMA(7 units*)-b-PMMA(4 units*),

After hydrolysis: PMMA(11 units)-b-PMA(7 units)-b-PMMA(4 units), Mw/Mn=1.12

* calculated from NMR analysis