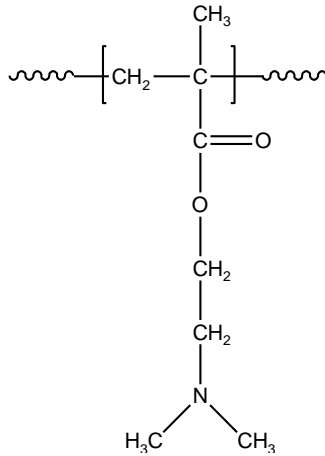


Sample Name:

Poly(N,N-dimethylaminoethyl methacrylate)

Sample # P16052-DMAEMA

Structure:



Composition:

$M_n \times 10^3$	PDI
28.0	1.8

Synthesis Procedure:

Poly(N,N-dimethylaminoethyl methacrylate) was synthesized by controlled radical polymerization.

Characterization:

The molecular weight and polydispersity index (PDI) of Poly(N,N-dimethylaminoethyl methacrylate) were obtained by size exclusion chromatography (SEC).

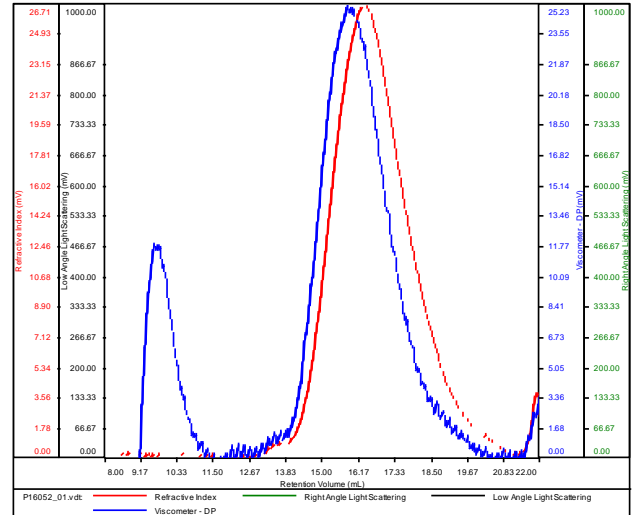
Solubility:

Poly(N,N-dimethylaminoethyl methacrylate) is soluble in THF, chloroform.

SEC elugram of the polymer:

P16052-DMAEMA

Conc (mg/mL)	3.2715
dn/dc (mL/g)	0.0870
Method	PS80k-May-25-2016-0000.vcm
Solvent	DMF w 0.023M LiBr
Column	PSS



Sample	Mn	Mw	Mp	Mw/Mn	IV
P16052_01.vdt	28,109	50,700	41,770	1.804	0.2176