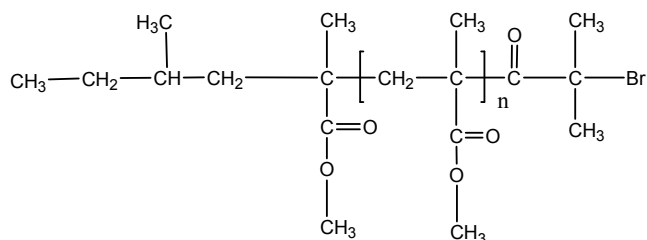


Sample Name:

ω -Bromo end functionalized Poly(methyl methacrylate) isotactic rich PMMA
(Macroinitiator for ATRP)

Sample #: **P10076F1-MMABr**

Structure:



Composition:

$M_n \times 10^3$	PDI
5.0	1.8
Iso contents > 88%	

Synthesis Procedure:

The Br end functionalized PMMA is prepared by anionic process.

Characterization:

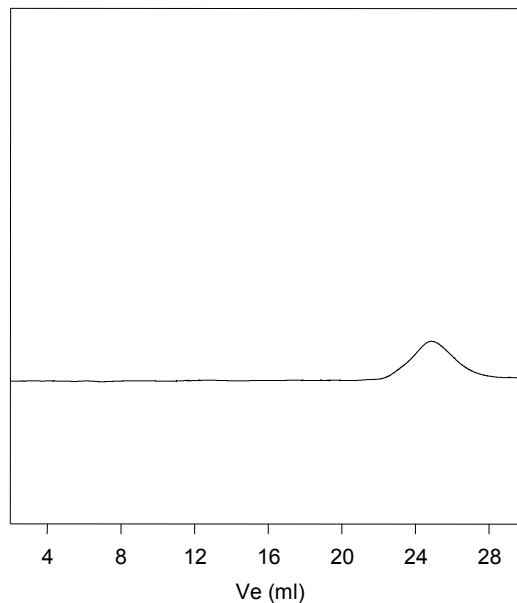
The molecular weight and polydispersity index of this polymer were determined by size exclusion chromatography (SEC) using a Varian liquid chromatograph equipped with a UV and refractive index detector.

Solubility:

Polymer is soluble in THF, toluene and CHCl_3 . It precipitates from methanol, ethanol, water and hexanes.

SEC of Sample:

P10076F1-MMABr



Size exclusion chromatograph of polymer:

Bromo end functionalized PMMA $M_n=5000$, $M_w=9,000$, $M_w/M_n=1.8$

