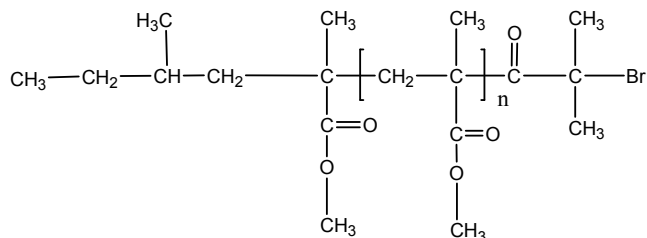


Sample Name:

**$\omega$ -Bromo end functionalized Poly(methyl methacrylate) isotactic rich PMMA**  
(Macroinitiator for ATRP)

**Sample #: P10076F3-MMABr**

**Structure:**



**Composition:**

| $M_n \times 10^3$  | PDI |
|--------------------|-----|
| 28.0               | 1.8 |
| Iso contents > 88% |     |

**Synthesis Procedure:**

The Br end functionalized PMMA is prepared by anionic process.

**Characterization:**

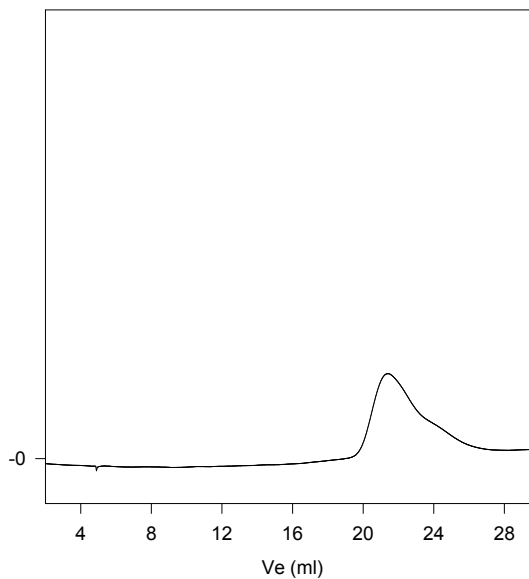
The molecular weight and polydispersity index of this polymer were determined by size exclusion chromatography (SEC) using a Varian liquid chromatograph equipped with a UV and refractive index detector.

**Solubility:**

Polymer is soluble in THF, toluene and  $\text{CHCl}_3$ . It precipitates from methanol, ethanol, water and hexanes.

**SEC of Sample:**

**P10076F3-MMABr**



Size exclusion chromatograph of polymer:

Bromo end functionalized PMMA  $M_n=28,000$ ,  $M_w=50,500$ ,  $M_w/M_n=1.8$

