

## Product Profile

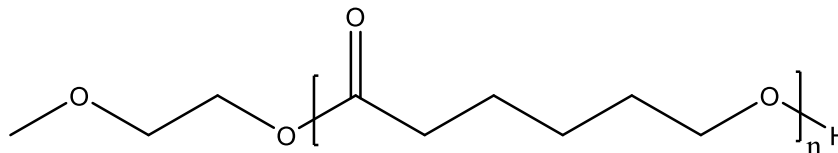
### Identification

**Product Name:** Poly(ε-Caprolactone)

**Product Lot Number:** P18183E-CL

**CAS #:** 24980-41-4

**Chemical Architecture:**



**Composition:**

<b>Mn (g/mole)</b>	<b>16,500</b>
<b>Mw (g/mole)</b>	<b>23,000</b>
<b>Mw/Mn</b>	<b>1.40</b>
<b>dn/dc (mL/g) in THF at 30 °C</b>	<b>0.030</b>

### Method of Synthesis

The polymer is synthesized by ring opening polymerization process.

**Solubility in different solvents:**

THF	√	DMF	√
Alcohol	X	CHCl <sub>3</sub>	√
Toluene	√	Water	X

### Validation of Architecture

#### A. Gel Permeation Chromatography (GPC), SEC Profile:

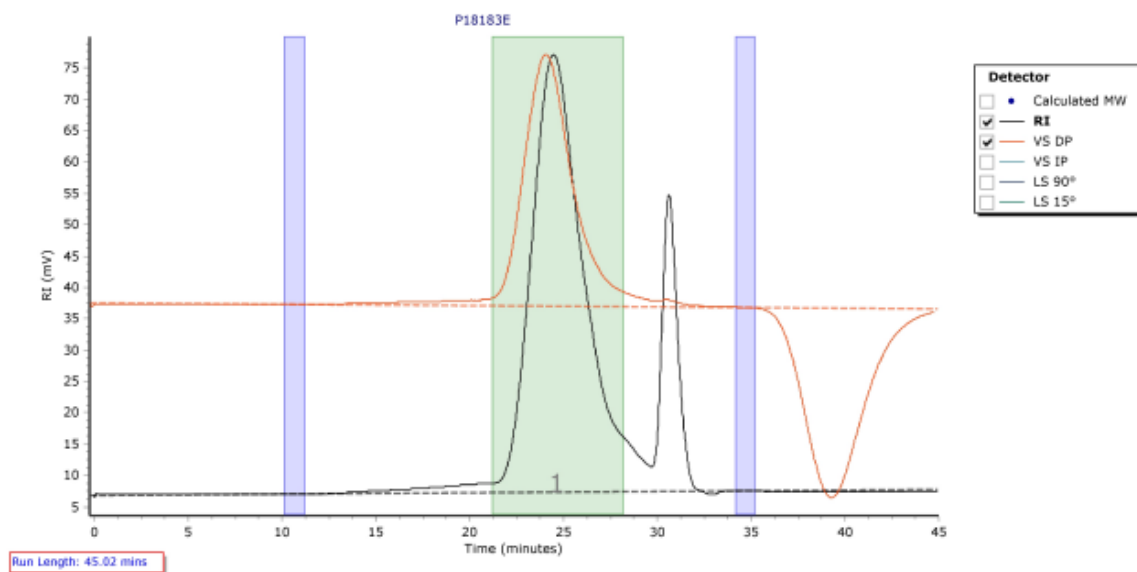
Molecular weights were determined by Agilent Technologie 1260 Infinity II GPC/SEC System equipped with Triple detector (RI, Viscometer, RALS 90° and LS 15°) and three columns (PLgel, 7.5x300 mm, 5μm-10μm, 10<sup>5</sup>-10<sup>6</sup>Å). THF (stabilized BHT) with 1%(v/v%) TEA was the eluent. The flow rate was 1.0 ml/min.



Polymer Source,™ Inc.

P18183E

Chromatogram Plot

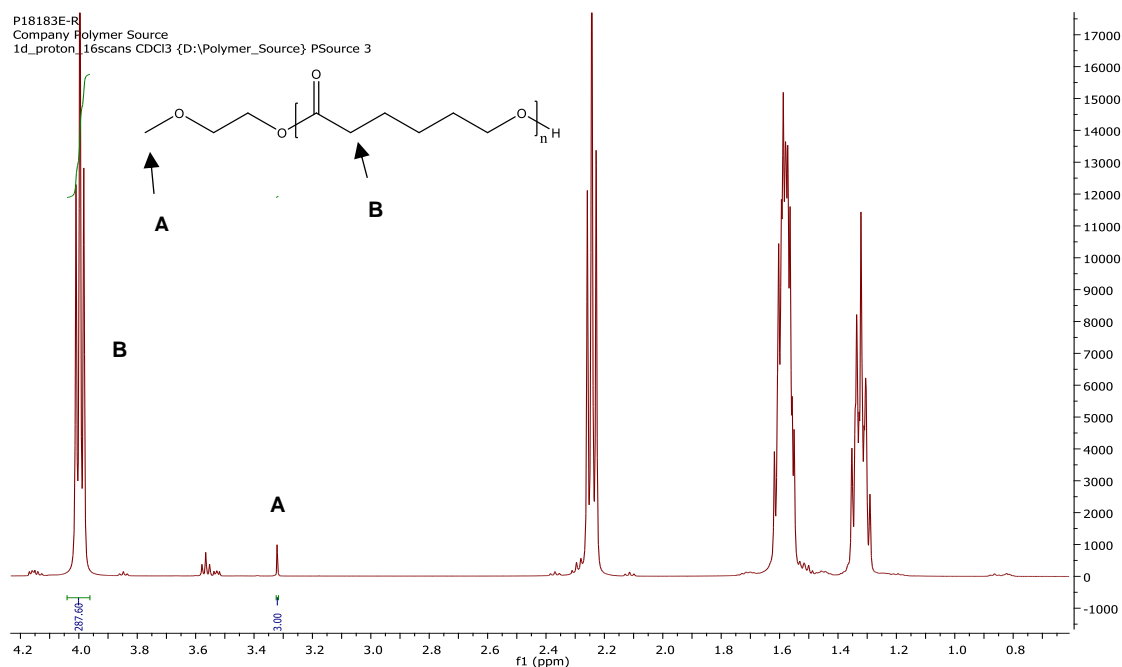


Molecular Weight Averages

Peak	Mp (g/mol)	Mn (g/mol)	Mw (g/mol)	Mz (g/mol)	Mz+1 (g/mol)	Mv (g/mol)	PD
Peak 1	22671	16320	22837	30209	38114	28982	1.399

## B. NMR (H<sup>1</sup>NMR) of CL

CL sample was dissolved in CDCl<sub>3</sub>. <sup>1</sup>H NMR spectra was determined using a 500 MHz. Bruker Avance III spectrometer.



124 avenue Avro, Dorval (Montreal)  
Quebec H9P 2X8 Canada  
Phone : +1-514-421-5517 or +1-514-421-5506  
[support@polymersource.com](mailto:support@polymersource.com)  
[www.polymersource.ca](http://www.polymersource.ca)