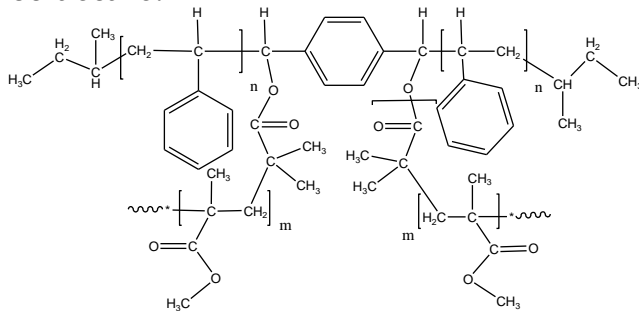


Sample Name:
Polystyrene with
Polymethylmethacrylate Comb like
Sample #: P10092E- SMMAcomb

Structure:



Composition:

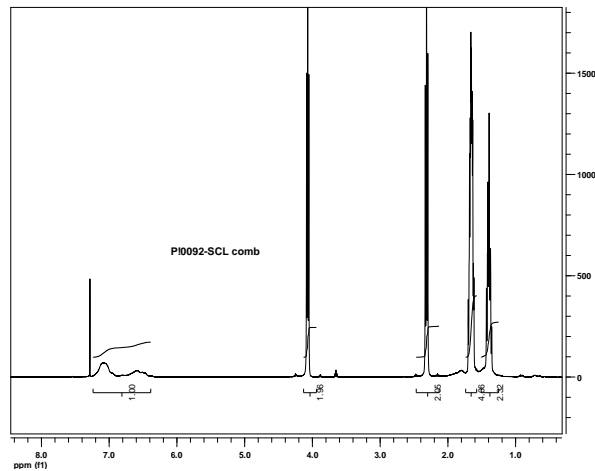
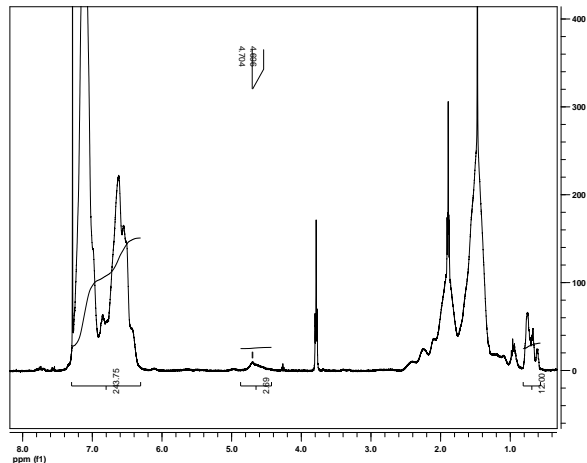
Mn x 10 ³	PDI
S-G-MMA (each branch) 5.0-b-10.0 (Mn total 25.0)	1.8
T _g (°C)	101

Characterization:

The molecular weight and polydispersity index of this polymer were determined by size exclusion chromatography (SEC) using a Varian liquid chromatograph equipped with a UV and refractive index detector.

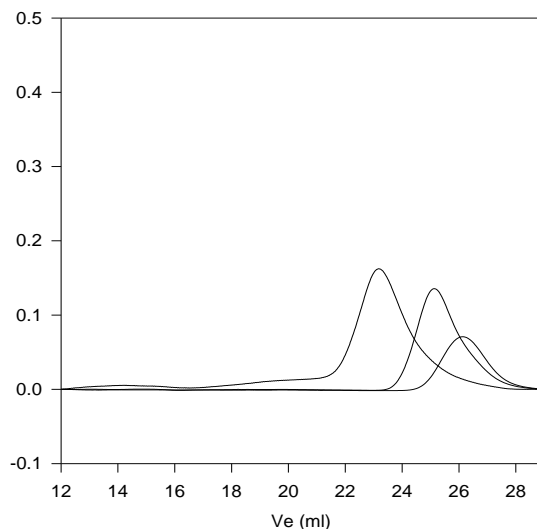
Thermal analysis of the samples was carried out using a differential scanning calorimeter (TA Q100) at a heating rate of 10°C/min. The inflection glass transition temperature (T_g) of the sample has been considered.

HNMR of the Polystyrene bearing Hydroxy groups in the center of polymer chains



SEC for the Product:

P10092E-S2MMA



Size exclusion chromatography of ω - α dihydroxy in the center polystyrene and after reaction with Caprolactone

M_n=2500, M_w=3500, PI=1.4

After linking reaction : Mn 5,000 Mw/Mn 1.4 functionality: >1.98%

Poly Methylmethacrylate; Eanch branch Mn 10,000 Mw/Mn 1.8

DSC thermogram for the polymer:

