

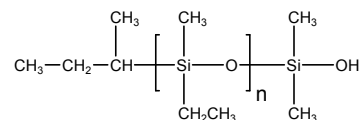
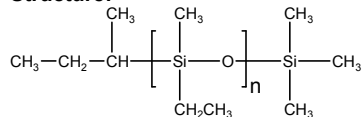
**Sample Name:** Poly(ethyl methyl siloxane)

**SEC of Homopolymer:**

**P10097C-EtMS**

**Sample #:** P10097C-EtMS

**Structure:**

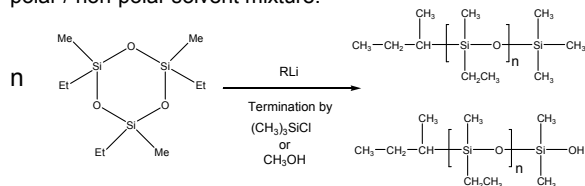


**Composition:**

Mn x 10 <sup>3</sup>	Mw/Mn
9.0	1.25

**Synthesis Procedure:**

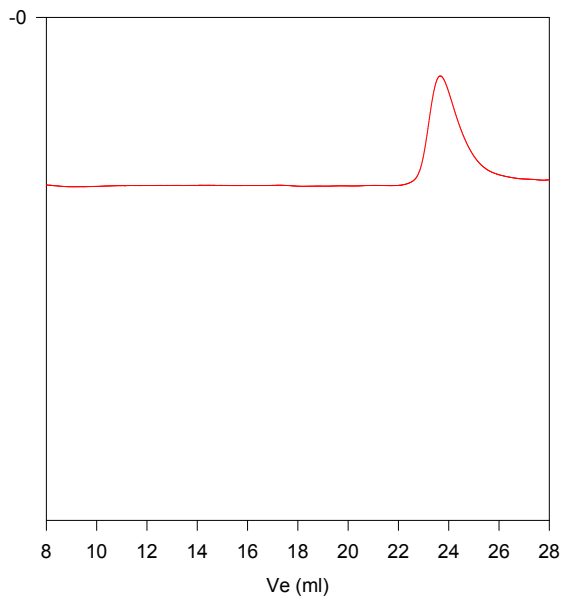
The polymerization of the cyclic trimer (1,3,5-trimethyl-1,3,5-triethyl cyclotrisiloxane-D3) (monomer synthesized) was initiated with a monofunctional lithium based initiator in a polar / non-polar solvent mixture.



**Characterization:**

The molecular weight and polydispersity index (PDI) are obtained by size exclusion chromatography (SEC) in THF. SEC analysis was performed on a Varian liquid chromatograph equipped with refractive and UV light scattering detectors. Three SEC columns from Supelco (G6000-4000-2000 HXL) were used with triple detectors from Viscotek Co. SEC instrument was calibrated with monodispersed poly dimethylsiloxane polymers.

**Solubility:** Soluble in Hexane, toluene, benzene, THF, CHCl<sub>3</sub>.



Size Exclusion Chromatography of Poly(ethylmethyl siloxane)

M<sub>n</sub>=9,000, M<sub>w</sub>=11,300, PI=1.25

