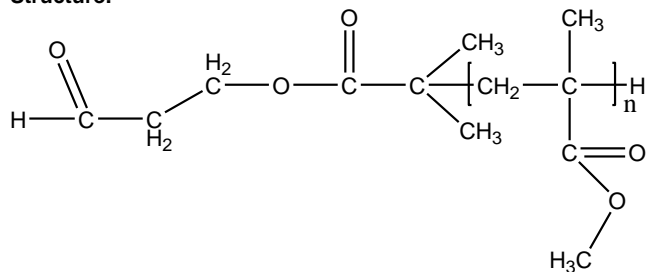


**Sample Name:**  
**Propionaldehyde Terminated Poly**  
**methylmethacrylate**

**Sample #:** P10109-2- MMA-CHO

**Structure:**



**Composition:**

Mn x 10 <sup>3</sup>	PDI	Functionality %
5.5	1.17	>82

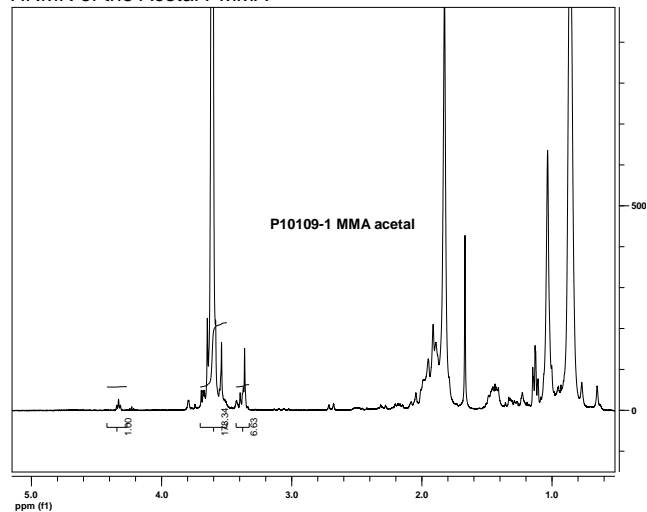
**Characterization:**

The molecular weight and polydispersity index of this polymer were determined before addition of the CO<sub>2</sub>H function, by size exclusion chromatography (SEC) using a Varian liquid chromatograph equipped with a UV and refractive index detector. Polymer functionality was determined by HNMR .

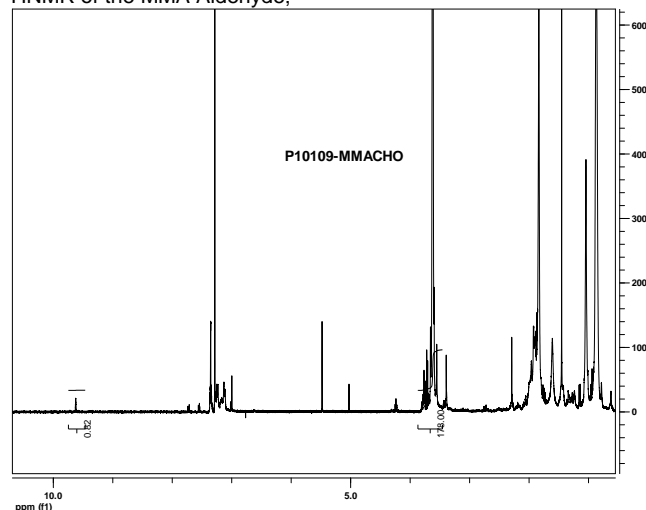
**Solubility:**

Polymer is soluble in toluene, THF, CHCl<sub>3</sub> and can be precipitated in water, cold methanol.

**HNMR of the Acetal PMMA**

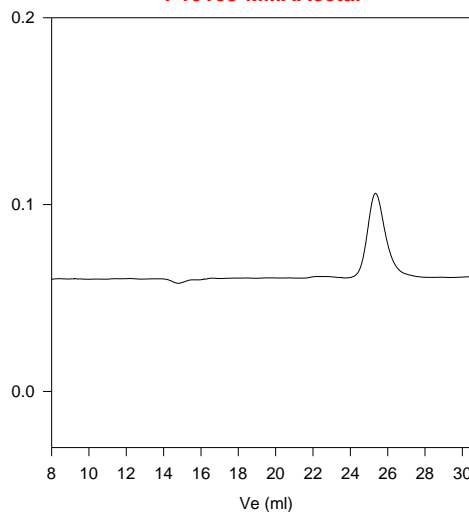


**HNMR of the MMA Aldehyde;**



**SEC of Sample:**

**P10109-MMAAcetal**



Size exclusion chromatography of polymer  
 — M<sub>n</sub>=5,500, M<sub>w</sub>=6,300, Mw/Mn=1.17