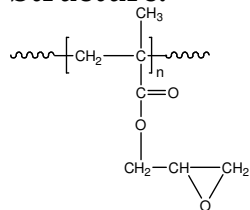


**Sample Name:**  
**Poly(glycidyl methacrylate)**

**Sample #: P18485-GMA**  
**(by Anionic process)**

**Structure:**

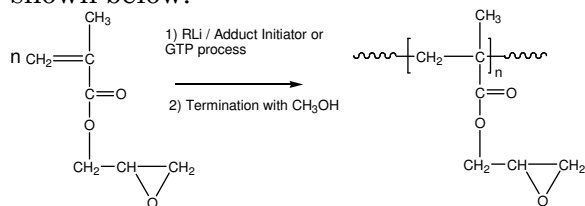


**Composition:**

$M_n \times 10^3$	PDI
5.5	2.8
$T_g$ ( $^{\circ}C$ )	72

**Synthesis Procedure:**

Poly(glycidyl methacrylate) is obtained by living anionic /GTP polymerization of glycidyl methacrylate. The reaction scheme used for the polymer synthesis is shown below:



**Characterization:**

The molecular weight and polydispersity index (PDI) of Poly(glycidyl methacrylate) are obtained by size exclusion chromatography.

**Thermal analysis:**

Thermal analysis of the samples was carried out on a TA Q100 differential scanning calorimeter at a heating rate of  $10^{\circ}C/min$ . The midpoint of the slope change of the heat flow plot of the second heating scan was considered as the glass transition temperature ( $T_g$ ).

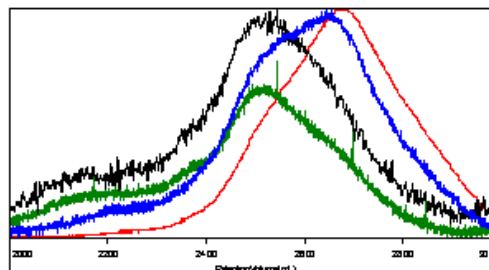
**Solubility:**

Poly(glycidyl methacrylate) is soluble in THF,  $CHCl_3$ , toluene and dioxane. The polymer precipitates from cold methanol and ethanol.

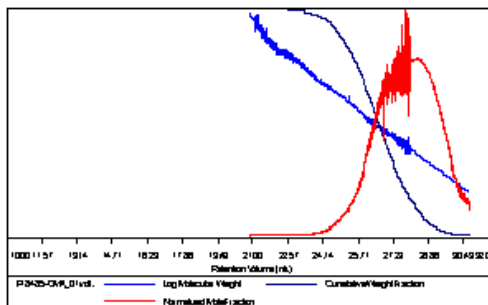
**SEC of Homopolymer:**

**Sample ID: P18485-GMA**

Concentration (mg/mL)	236140
Sample dir/cd: (m Lg)	00850
Method file	PS0014Apr15201400000um
Column Set	3x PL 1113-6000
Solvent	THF



Sample	Mn	Mw	Mp	Mw/Mn	IV
P18485-GMA, 01 unit	5,352	15,703	5,432	2.933	0.0294



**DSC thermogram of the polymer:**

