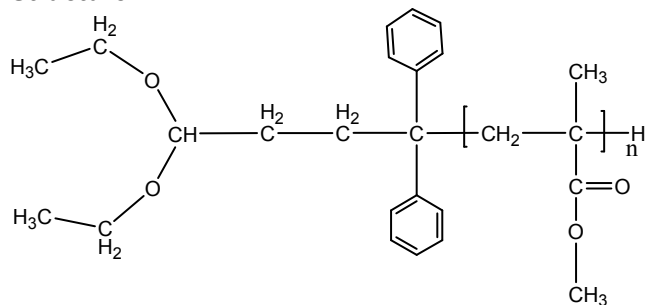


Sample Name:

**Diethyl acetal Propionaldehyde Terminated Poly methylmethacrylate**

Sample #: **P10109A- MMA-acetal**

**Structure:**



**Composition:**

Mn x 10 <sup>3</sup>	PDI	Functionality %
8.0	1.05	>99

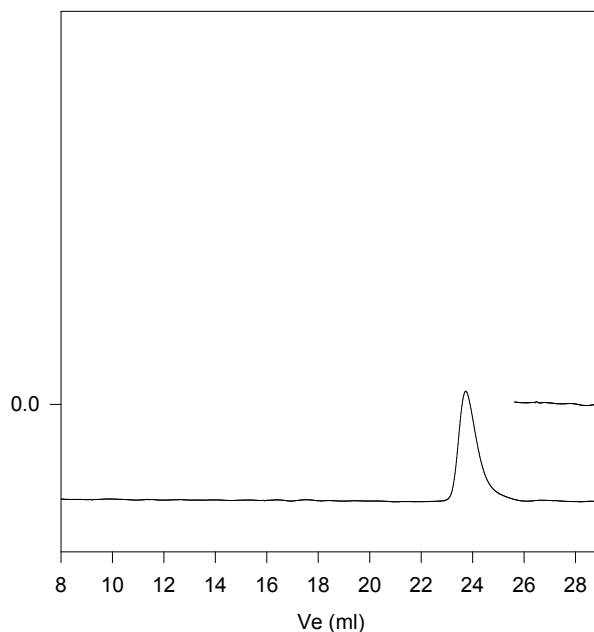
**Characterization:**

The molecular weight and polydispersity index of this polymer were determined before addition of the CO<sub>2</sub>H function, by size exclusion chromatography (SEC) using a Varian liquid chromatograph equipped with a UV and refractive index detector. Polymer functionality was determined by HNMR.

**Solubility:** Polymer is soluble in toluene, THF, CHCl<sub>3</sub> and can be precipitated in water and cold methanol.

SEC of Sample:

**P10109A-MMAAcetal**



**HNMR of the Acetal PMMA**

