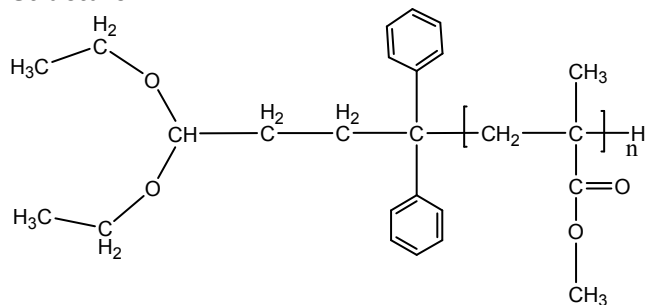


Sample Name:

**Diethyl acetal Propionaldehyde Terminated Poly methylmethacrylate**

Sample #: **P10109B-MMA-acetal**

**Structure:**



**Composition:**

Mn x 10 <sup>3</sup>	PDI	Functionality %
7.5	1.12	>99

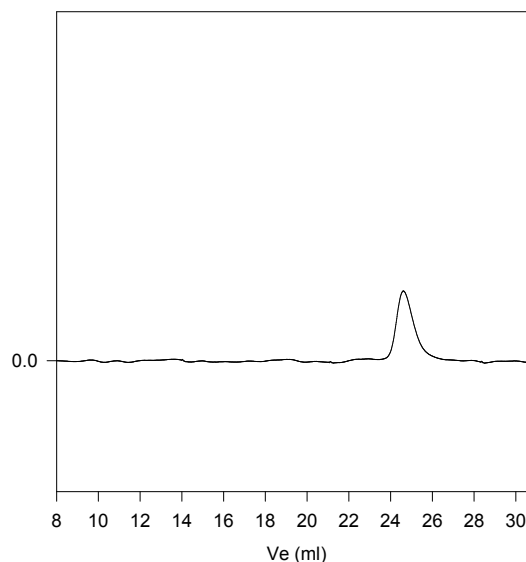
**Characterization:**

The molecular weight and polydispersity index of this polymer were determined before addition of the CO<sub>2</sub>H function, by size exclusion chromatography (SEC) using a Varian liquid chromatograph equipped with a UV and refractive index detector. Polymer functionality was determined by HNMR .

**Solubility:** Polymer is soluble in toluene, THF and CHCl<sub>3</sub> and can be precipitated in water and cold methanol.

**SEC of Sample:**

**P10109B-MMAAcetal**



Size exclusion chromatography of polymer  
— M<sub>n</sub>=7,500, M<sub>w</sub>=8,300, Mw/Mn=1.12

**HNMR of the Acetal PMMA**

