

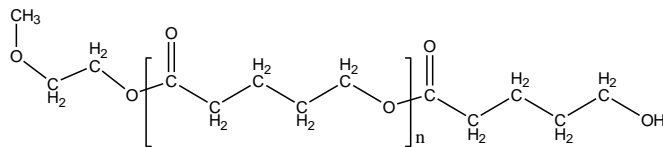
Sample Name: Poly(δ -Valerolactone)

SEC of Sample:

P18711D-VLA

Sample #: P18711D-VLOCH3

Structure:



Composition:

Mn x 10 ³	PDI
8.0	1.25

Synthesis Procedure:

By ring opening polymerization using tin octoate as catalyst and methoxy ethanol as initiator.

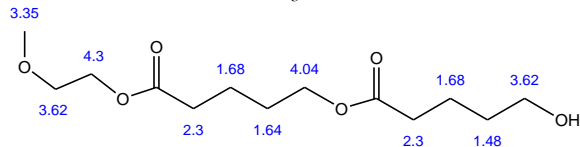
Characterization:

The molecular weight and polydispersity index (PDI) are obtained by size exclusion chromatography.

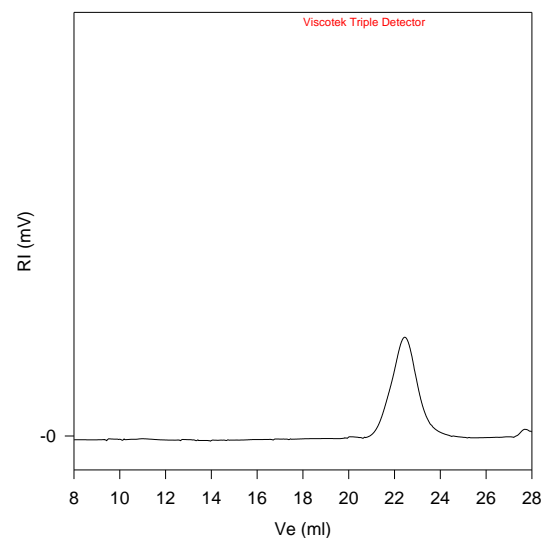
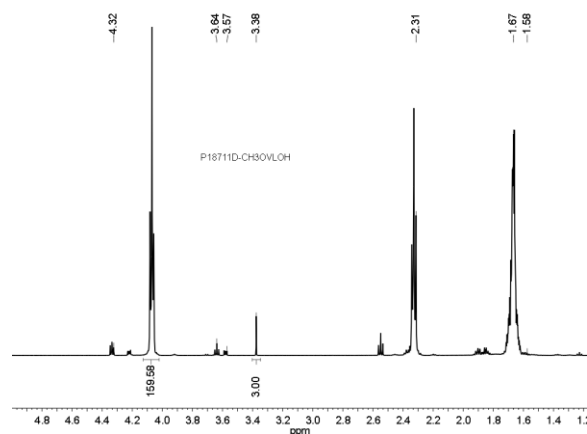
Solubility:

Polymer is soluble in toluene, THF, CHCl₃ and CH₂Cl₂. The polymer is insoluble in methanol, hexane and ether.

Chemical Shifts in CDCl₃:



¹H NMR of the Polymer:



Size Exclusion Chromatography of Polymer;
—— M_n = 8,000, M_w = 10,000, M_w/M_n = 1.25