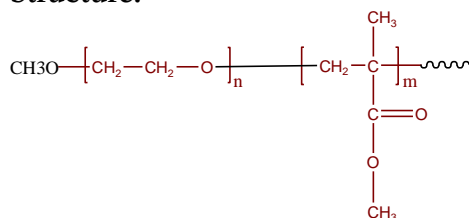


Sample Name:

Poly(ethylene oxide-b-methyl methacrylate)

Sample #: **P18730A-EOMMA**

Structure:

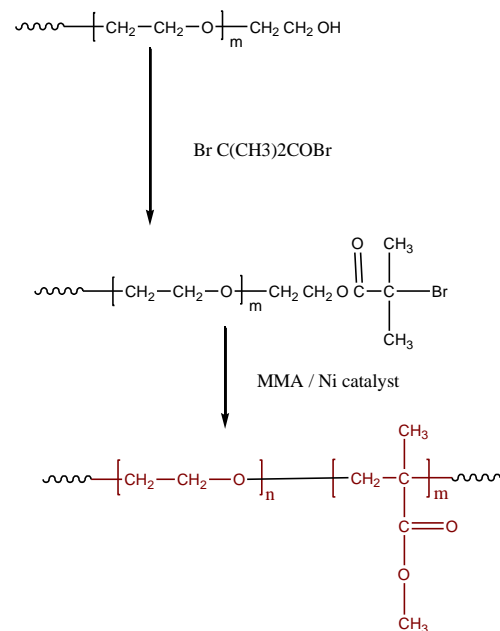


Composition:

Mn x 10 ³ PEO-b-MMA	PDI
2.4-b-2.3	1.10

Synthesis Procedure:

Poly(Ethylene oxide-methyl methacrylate) is prepared as shown in the scheme below:



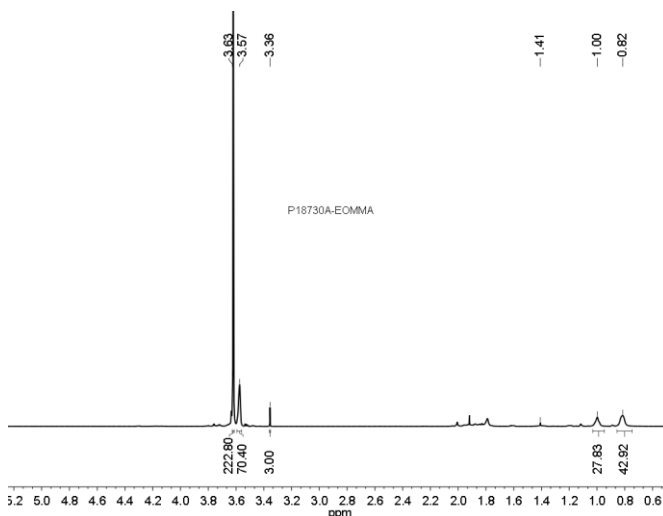
Characterization:

Polymer composition was determined by H NMR taking the integration of PEG block at 3.66 ppm and methyl ester of PMMA block at 3.62 ppm. Molecular weights of the first block and the Mw/Mn of the final and the first block was determined by SEC in THF.

Solubility:

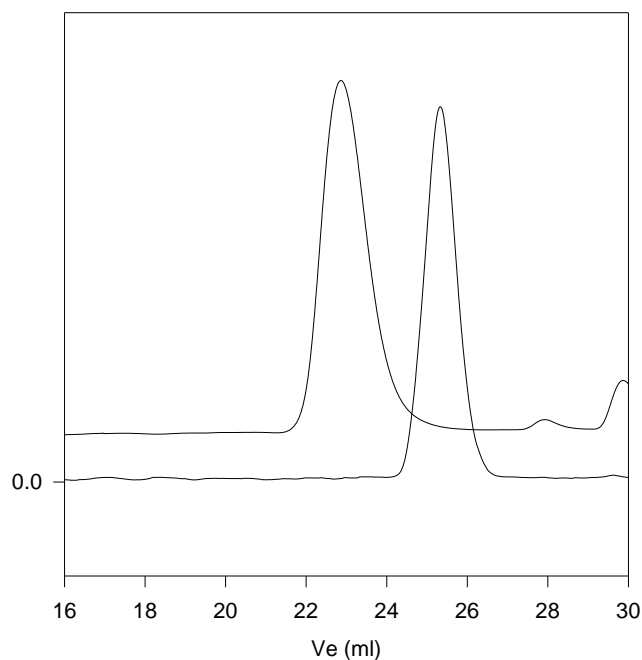
Poly(ethylene oxide -b- MMA) is soluble in CHCl_3 , THF, toluene. The polymer precipitated out from hexane.

¹H-NMR Spectrum of the block copolymer:



SEC of the block copolymer:

P18730A-EOMMA



Size exclusion chromatography of poly(EO-b-MMA)

— PEO, $M_n=2,400$, $M_w=2,600$, $M_w/M_n=1.06$

— Poly(ethylene oxide-b-methyl methacrylate)

Mn: PEO(2,400)-b-MMA(2,300) $M_w/M_n=1.10$

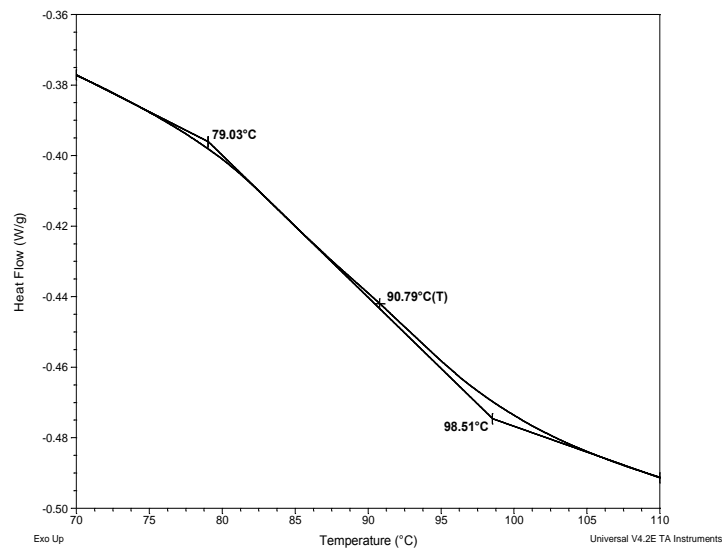
Thermal analysis of the sample# P18730A-EOMMA

Thermal analysis of the samples was carried out on a TA Q100 differential scanning calorimeter at a heating rate of 20°C/min. The midpoint of the slope change of the heat flow plot of the second heating scan was considered as the glass transition temperature (T_g).

Thermal analysis results at a glance

For PMMA block		
T_g : 91°C	T_m : -	T_c : -
For PEO block		
T_g : -66°C	T_m : 50°C	T_c : Not found

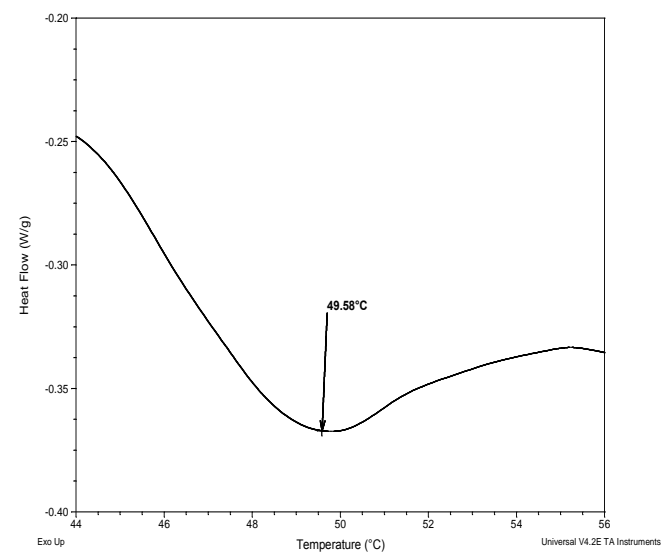
Thermogram for the MMA block



Melting curve for the sample

The melting temperature (T_m) was taken as the maximum of the endothermic peak.

Melting curve for PEO block



Thermogram for PEO block

