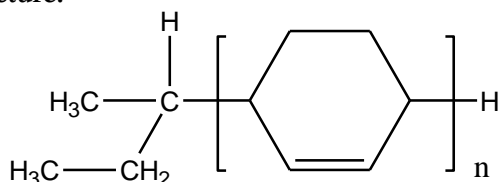


Sample Name:

Poly(1-4 Cyclohexadiene) 1,4 rich addition

Sample #: **P18882-CHD**

Structure:



Composition:

Mn x 10 ³	PDI
0.7	1.45

Synthesis Procedure:

Poly cyclohexadiene rich in 1,4 addition is obtained by anionic polymerization in cyclohexane.

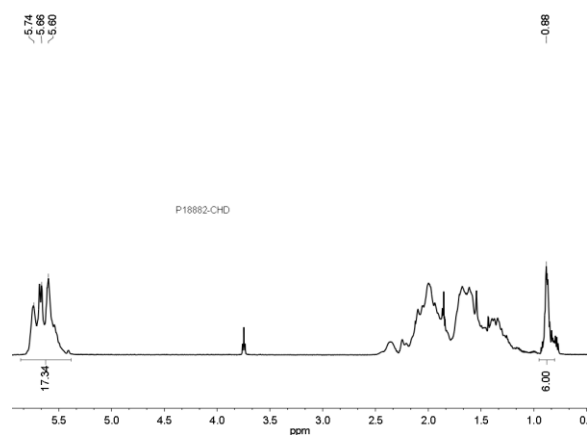
Characterization:

The molecular weight and polydispersity index (PDI) are obtained by size exclusion chromatography. Polymer was characterized by HNMR

Solubility:

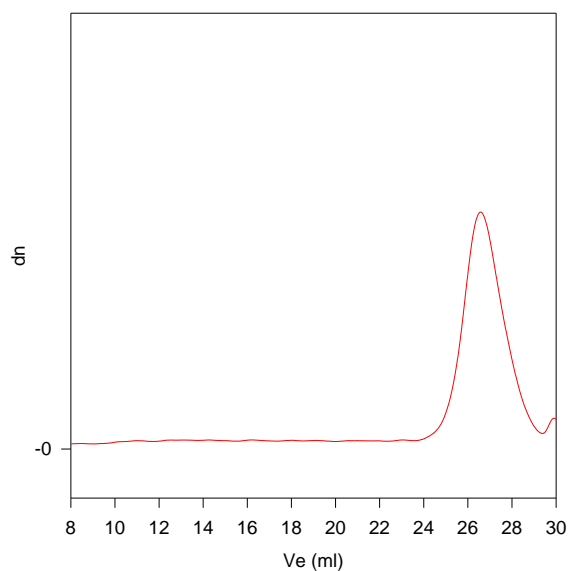
Polymer is partially soluble in THF to obtain a solution that is not clear but light brown color.

HNMR of the PCHD:



SEC of Homopolymer:

P18882-CHD



Size Exclusion Chromatography of Poly(Cyclo hexadiene)

M_n=700, M_w=1000, PI=1.45