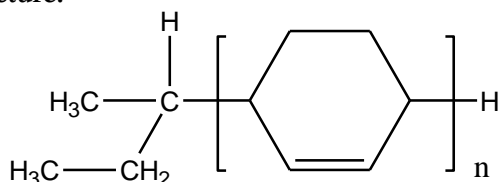


Sample Name:

**Poly(1-4 Cyclohexadiene) 1,4 rich addition**

Sample #: **P18883-CHD**

**Structure:**



**Composition:**

Mn x 10 <sup>3</sup>	PDI
0.9	1.10

**Synthesis Procedure:**

Poly cyclohexadiene rich in 1,4 addition is obtained by anionic polymerization in cyclohexane.

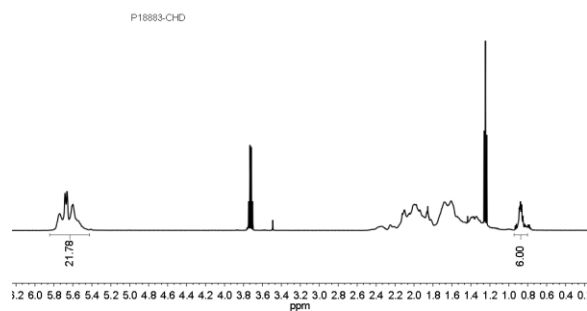
**Characterization:**

The molecular weight and polydispersity index (PDI) are obtained by size exclusion chromatography. Polymer was characterized by HNMR

**Solubility:**

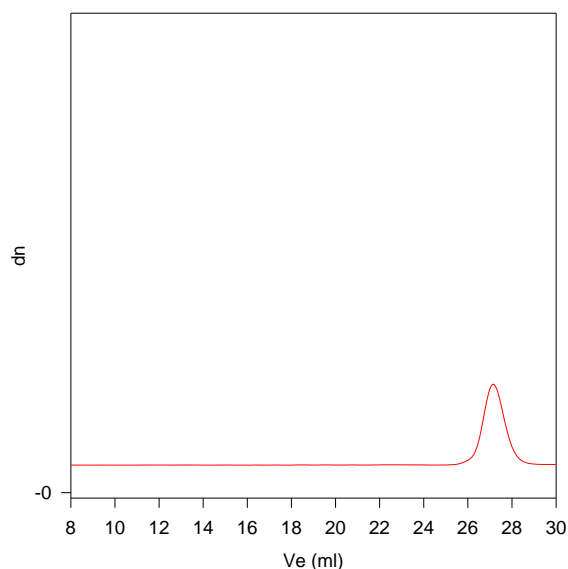
Polymer is partially soluble in THF to obtain a solution that is not clear but light brown color.

**HNMR of the PCHD:**



**SEC of Homopolymer:**

**P18883-CHD**



Size Exclusion Chromatography of Poly(Cyclo hexadiene)

M<sub>n</sub>=900, M<sub>w</sub>=1000, PI=1.10