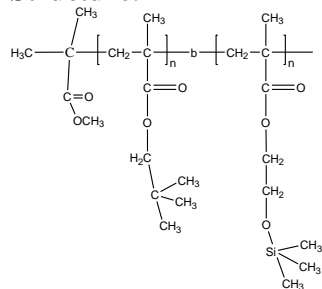


**Sample Name: Poly (Neopentyl methacrylate-b- 2-Trimethyl siloxy ethyl methacrylate)**

Sample #: **P18898-NPMAHEMA-TMS**

### Structure:



**Composition:**

Mn $\times 10^3$ NPMA-b-HEMATMS	PDI
3.0-b-3.5	1.22
T <sub>g</sub> for NPMA block:	119°C

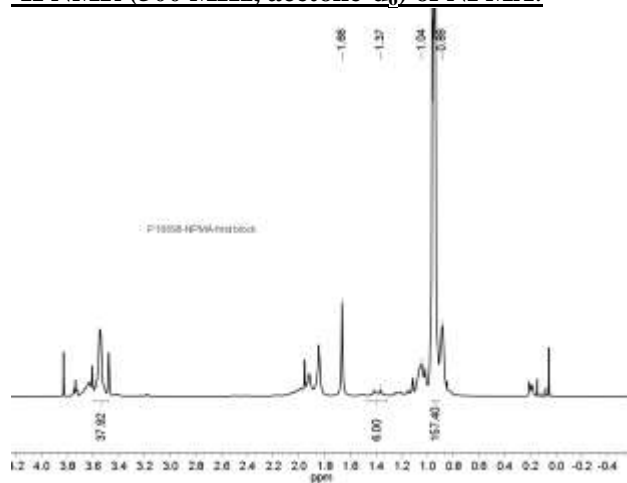
### Synthesis Procedure:

The polymer was synthesized by GTP polymerization process.

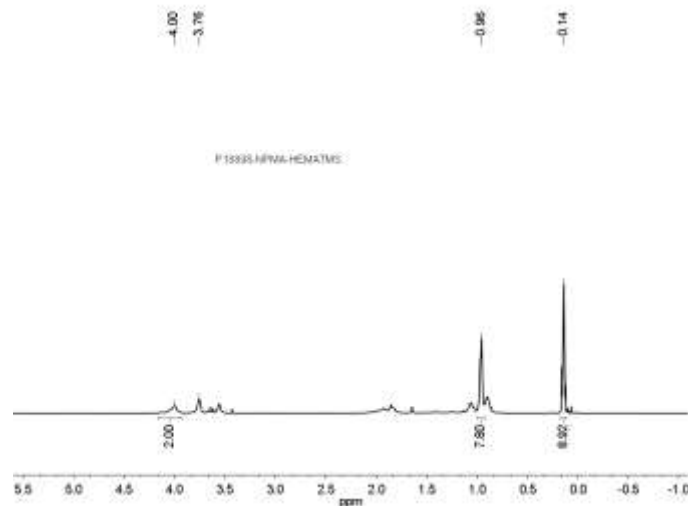
### Characterization:

The product was characterized by size exclusion chromatography (SEC) and  $^1\text{H}$  NMR.

**<sup>1</sup>H NMR (500 MHz, acetone-d<sub>6</sub>) of NPMA:**



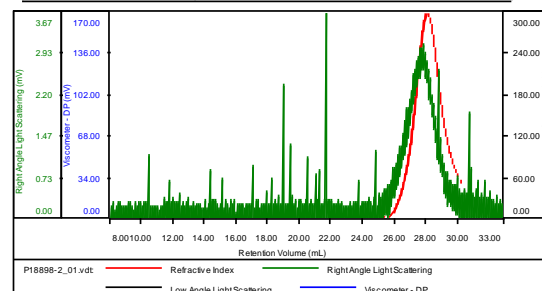
**<sup>1</sup>H NMR (500 MHz, acetone-d<sub>6</sub>) of NPMA-HEMATMS:**



**SEC of the block copolymer:**

**Sample ID: P18898-NPMA-HEMATMS**

Concentration (mg/mL)	9.3378
Sample dn/dc (mL/g)	0.0800
Method File	PS80K-0923-2014-0000.vcm
Column Set	3x PL 1113-6300
Solvent	THF



Sample	MW Number Average (Da)	MW Weight Average (Da)	MW at Peak (Da)	Polydispersity	Intrinsic Viscosity (dL/g)
P1889B-2_01.vcl	6,481	7,524	8,408	1.223	0.0466