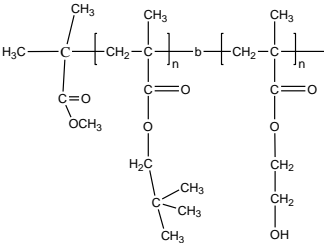


Sample Name: Poly(Neopentyl methacrylate-b- 2-Hydroxy ethyl methacrylate)

Sample #: P18898A-NPMAHEMA

Structure:



Composition:

Mn × 10 ³ NPMA-b-HEMA	PDI
3.0-b-2.5	1.10
T _g for NPMA block:	119°C

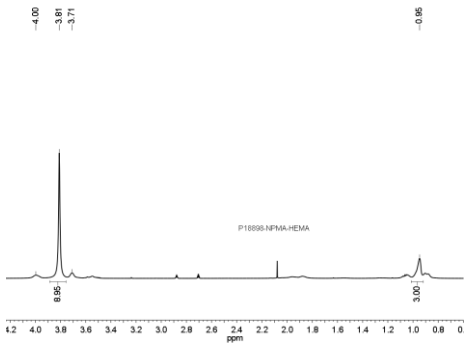
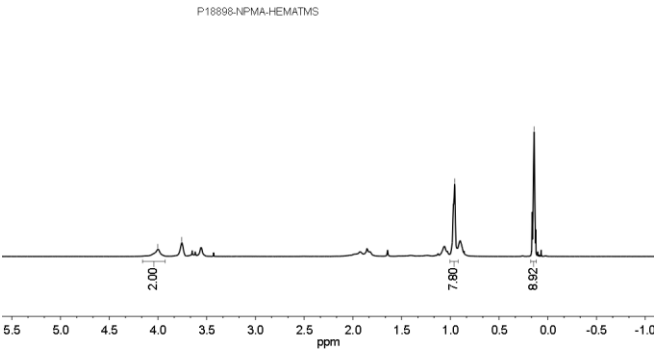
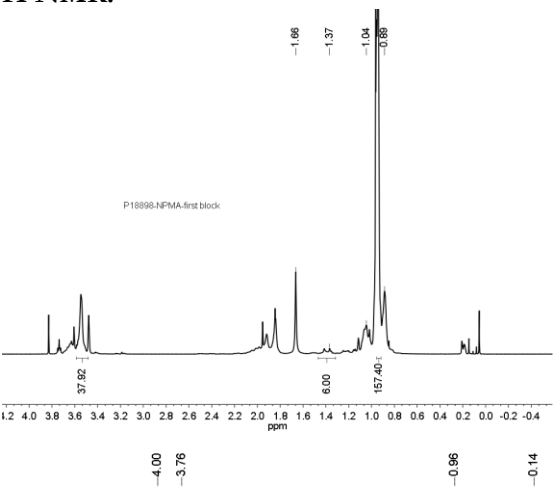
Synthesis Procedure:

By GTP process.

Characterization:

BY SEC and HNMR

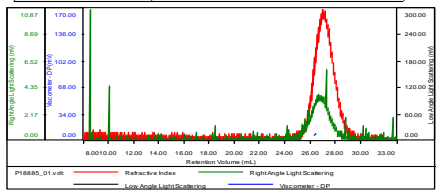
H NMR:



SEC of the block copolymer:

Sample ID: P18885-2

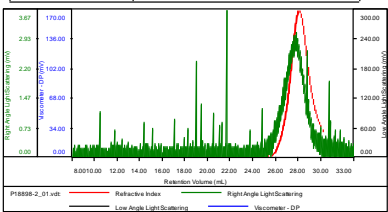
Concentration (mg/mL)	1.5909
Sample dn/dc (mL/g)	0.0840
Method File	P18885-0016-2014-0000.vcm
Column Set	3x PL 1113-6300
Solvent	THF



Sample	MW Number Average (Da)	MW Weight Average (Da)	MW at Peak (Da)	Polydispersity	Intrinsic Viscosity (dL/g)
P18885_01.vcl	10,332	11,376	13,631	1.101	0.2143

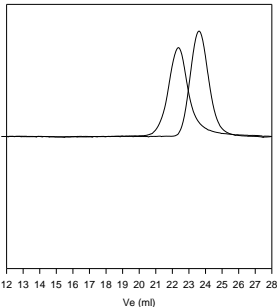
Sample ID: P18898-NPMA-HEMATMS

Concentration (mg/mL)	0.3378
Sample dn/dc (mL/g)	0.0800
Method File	P18898-0023-2014-0000.vcm
Column Set	3x PL 1113-6300
Solvent	THF



Sample	MW Number Average (Da)	MW Weight Average (Da)	MW at Peak (Da)	Polydispersity	Intrinsic Viscosity (dL/g)
P18898-2_01.vcl	6,481	7,324	8,408	1.223	0.0466

P18898-NPMA-HEMATMS



Size exclusion chromatography of
poly(Neopentyl methacrylate-b-HEMATMS)
— NPMA: M_n~3,000, M_w~3,500, PI~1.2
— Block copolymer Mn : NPMA(3,000)-b-HEMATMS 3,500)
Mw/Mn 1.22