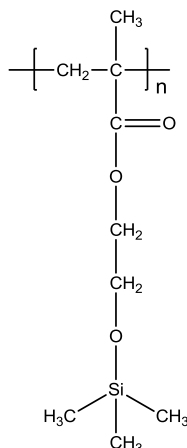


**Sample Name: Poly( trimethyl siloxy 2-ethyl methacrylate)**

**Sample #: P18899C-HEMATMS**  
**(synthesized by GTP polymerization of HEMA-TMS monomer)**

**Structure:**



**Composition:**

Mn x 10 <sup>3</sup>	PDI
13.0	1.15
Microstructure	Isio:hetero:syndio 6:41:53

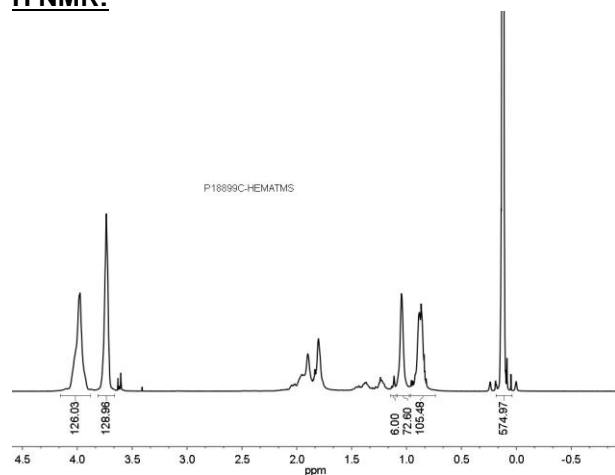
**Characterization:**

The molecular weight and polydispersity index (PDI) by size exclusion chromatography in DMF at 60°C using TDA Viscotek triple detector.

**Solubility:**

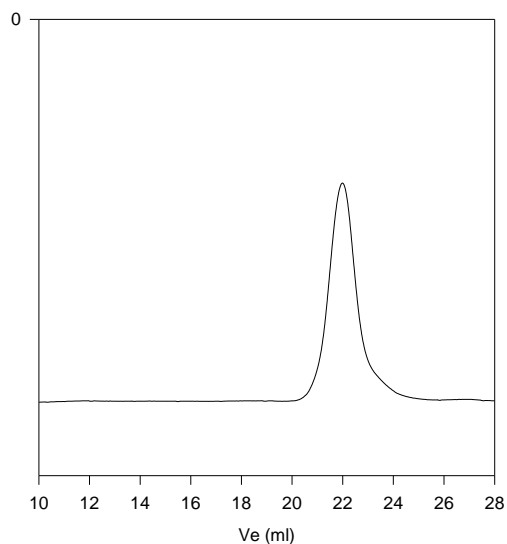
Polymer is soluble in acetone, THF, DMF, etc

**H NMR:**



**SEC of Homopolymer:**

**P18899C-HEMATMS**



Size exclusion chromatograph of Poly(2-trimethyl siloxylethylmethacrylate):  
M<sub>n</sub>=13,000, M<sub>w</sub>=15,000, PI=1.15