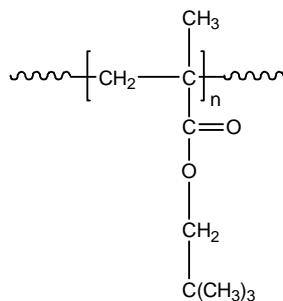


Sample Name: **Poly(neopentyl methacrylate)**

Sample #: **P18919-NPMA**

**Structure:**



**Composition:**

Mn x 10 <sup>3</sup>	PDI
17.0	1.19

**Synthesis procedure:**

The polymer was synthesized by GTP process.

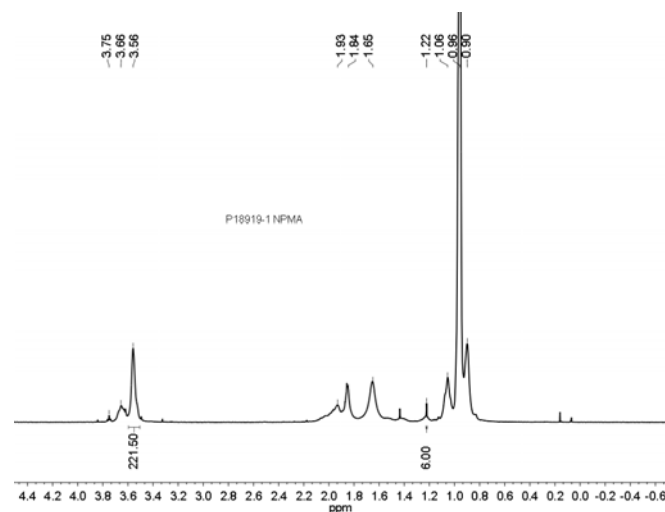
**Characterization:**

The molecular weight and polydispersity index (PDI) of poly(neopentyl methacrylate) were determined by size exclusion chromatography (SEC). The molecular structure and purity of the polymer was confirmed by <sup>1</sup>H NMR spectroscopy.

**Solubility:**

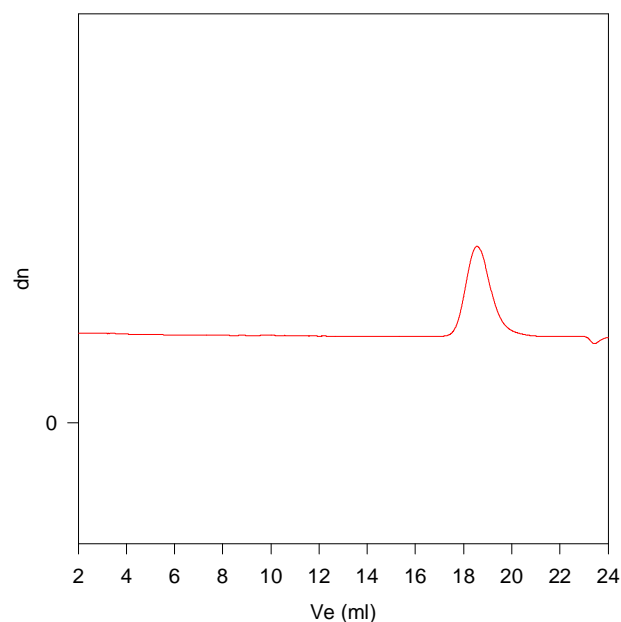
Poly(neopentyl methacrylate) is soluble in THF, CHCl<sub>3</sub>, toluene, and dioxane. The polymer precipitates from hexanes, methanol, and ethanol.

**<sup>1</sup>H NMR (500 MHz, CDCl<sub>3</sub>) spectrum:**



**SEC elugram:**

**P18919-NPMA**



Size Exclusion Chromatography of Poly(neopentyl methacrylate)

M<sub>n</sub>=17,000, M<sub>w</sub>=20,000 PI=1.19