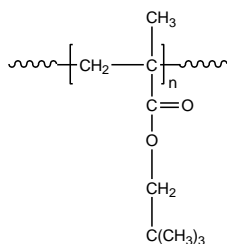


Sample Name: Poly(neopentyl methacrylate)

Sample #: P18920-NPMA

Structure:

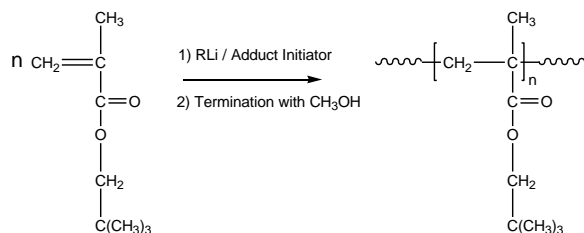


Composition:

$M_n \times 10^3$	PDI
1000.0	1.35

Synthesis Procedure:

Poly(neopentyl methacrylate) is obtained by living anionic polymerization of neopentyl methacrylate. The reaction scheme used for the polymer synthesis is shown below:



Characterization:

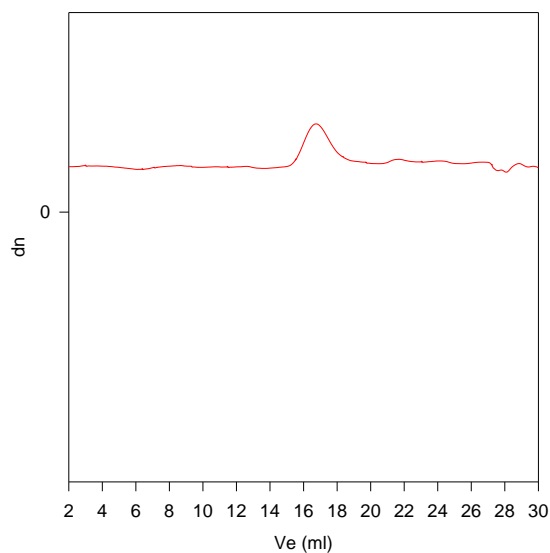
The molecular weight and polydispersity index (PDI) of Poly(neopentyl methacrylate) are obtained by size exclusion chromatography.

Solubility:

Poly(neopentyl methacrylate) is soluble in THF, CHCl_3 , toluene and dioxane. The polymer precipitates from hexanes, methanol and ethanol.

SEC of Homopolymer:

P18920-NPMA



$M_n=1,100,000$, $M_w=1,350,000$ $PI=1.35$