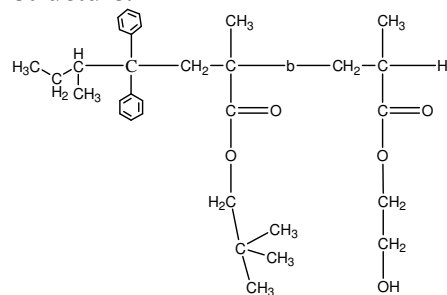


Sample Name: Poly(Neopentyl methacrylate-b- 2-Hydroxy ethyl methacrylate)

Sample #: P18921A-NPMAHEMA

Structure:



Composition:

$M_n \times 10^3$ NPMA-b-HEMA	PDI
50.0-b-11.5	1.3
T_g for NPMA block:	119°C

Synthesis Procedure:

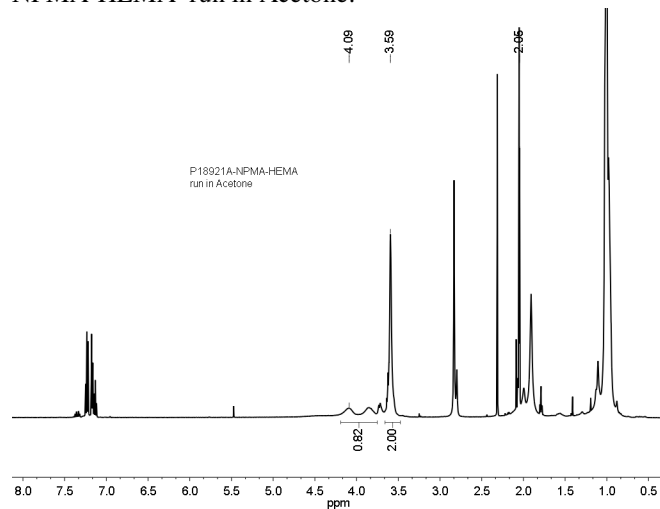
By anionic polymerization process

Characterization:

BY SEC and HNMR

H NMR:

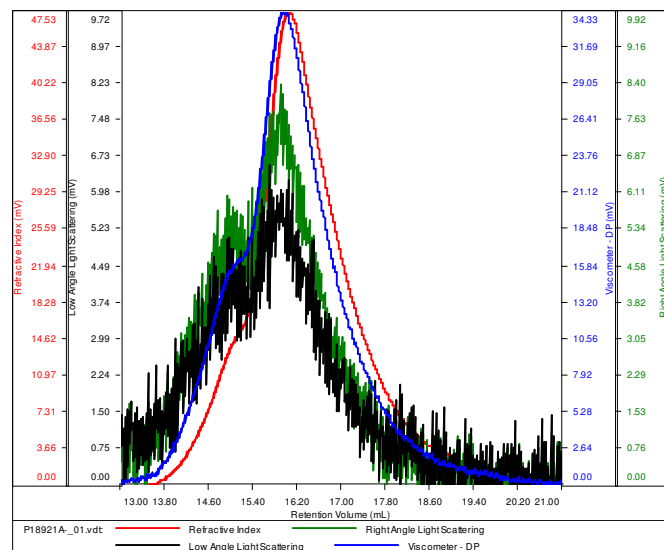
NPMA-HEMA run in Acetone:



SEC of the block copolymer: run in DMF

SAMPLE ID: P18921A-NPMAHEMA

Conc (mg/mL)	4.2827
dn/dc (mL/g)	0.0650
Method	PS80K-NOV2014-0000.vcm
Solvent	DMF w 0.03M LiBr
Column	PSS



Sample	M_n	M_w	M_p	M_w/M_n	IV
P18921A-.01.vdt	61,458	83,053	65,534	1.351	0.1709