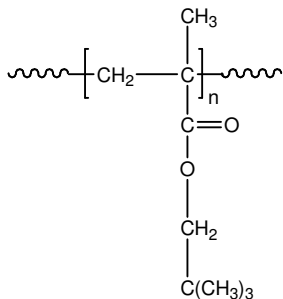


Sample Name: **Poly(neopentyl methacrylate)**

Sample #: **P18926-NPMA**

Structure:



Composition:

Mn x 10 ³	PDI
167.0	1.04

Synthesis procedure:

The polymer was synthesized by GTP process.

Characterization:

The molecular weight and polydispersity index (PDI) of poly(neopentyl methacrylate) were determined by size exclusion chromatography (SEC). The molecular structure and purity of the polymer was confirmed by ¹H NMR spectroscopy.

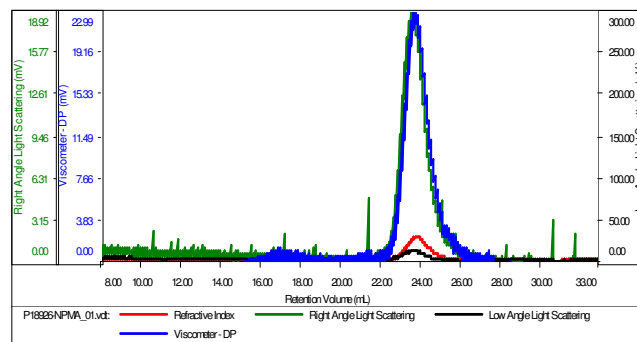
Solubility:

Poly(neopentyl methacrylate) is soluble in THF, CHCl₃, toluene, and dioxane. The polymer precipitates from hexanes, methanol, and ethanol.

SEC elugram:

Sample ID: P18926-NPMA

Concentration (mg/mL)	0.2666
Sample dn/dc (mL/g)	0.0940
Method File	PS80K-NOV27-2014-0000.vcm
Column Set	3x PL 1113-6300
Solvent	THF



Sample	MW Number Average (Da)	MW Weight Average (Da)	MW at Peak (Da)	Polydispersity	Intrinsic Viscosity (dL/g)
P18926-NPMA_01.vcl	166,696	173,314	165,427	1.040	2.8065