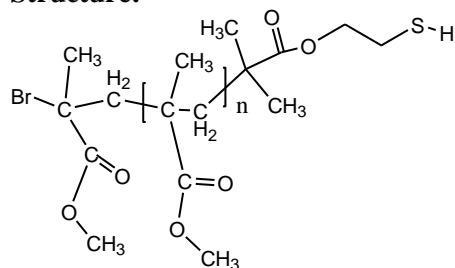


Sample Name: Thiol Terminated Poly (methyl methacrylate)

Sample #: P19022-MMASH

Structure:

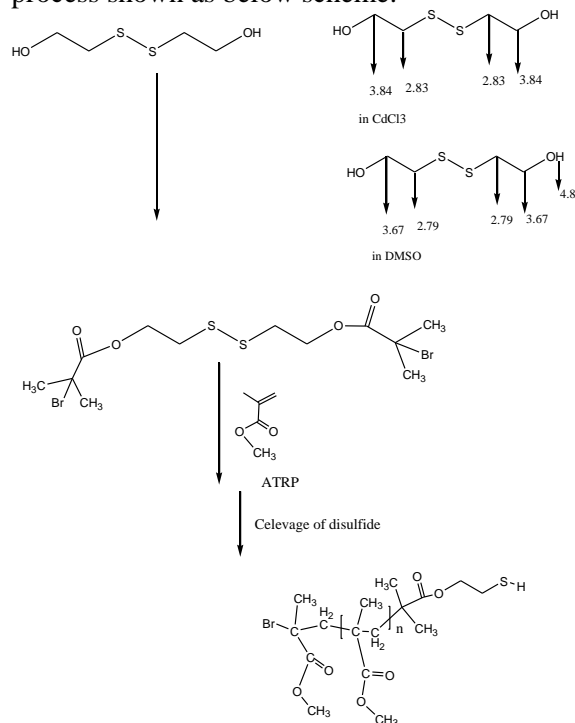


Composition:

Mn x 10 ³	PDI
22.0	1.5
Syndio:hetero:iso ratio	55:40:5

Synthesis Procedure:

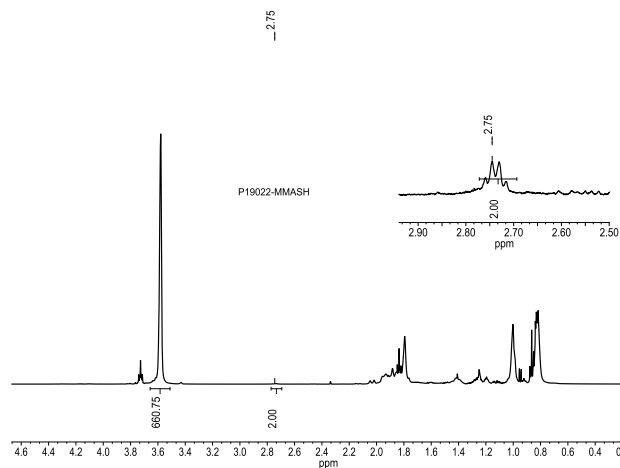
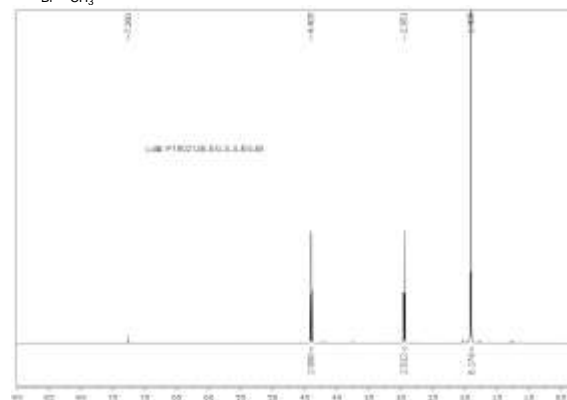
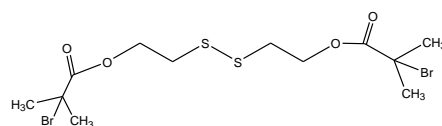
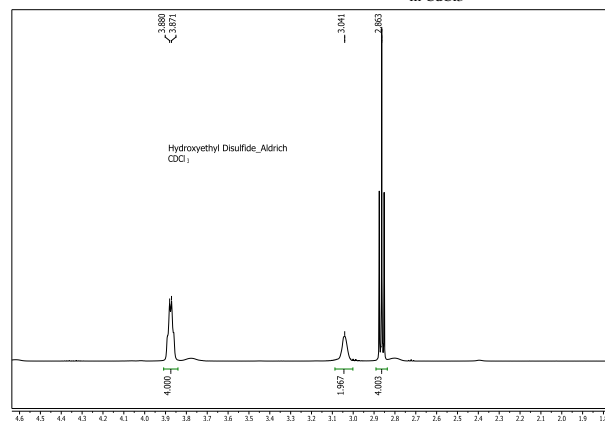
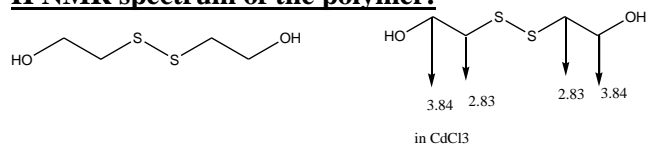
The product is prepared by ATRP polymerization process shown as below scheme:



Characterization:

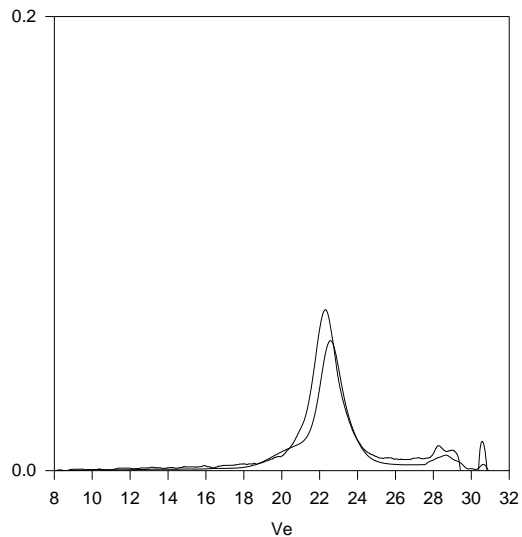
The polymer was characterized by size exclusion chromatography (SEC) and by ¹HNMR.

H NMR spectrum of the polymer:



SEC of Sample:

P19022-MMASH



Size Exclusion Chromatography of Thiol end Poly(methyl methacrylate):

1. Disulfide stage: $M_n = 44,000$, $M_w 66,000$, $M_w/M_n = 1.5$
2. After Cleavage of disulfide link:
 $M_n 22,000$, $M_w 33,000$ $M_w/M_n 1.5$

SH Functionality >98%