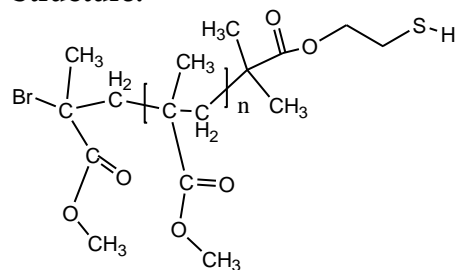
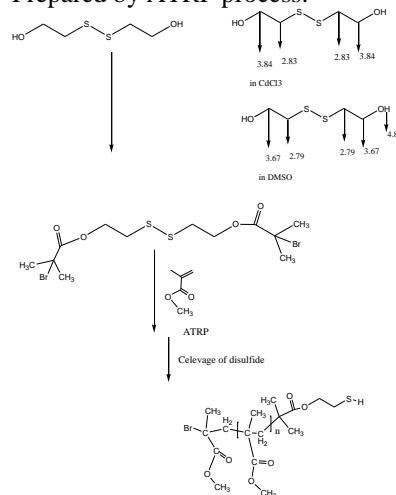


Sample Name:**Thiol Terminated Poly(methyl methacrylate)****Sample #: P19022A-MMASH****Structure:****Composition:**

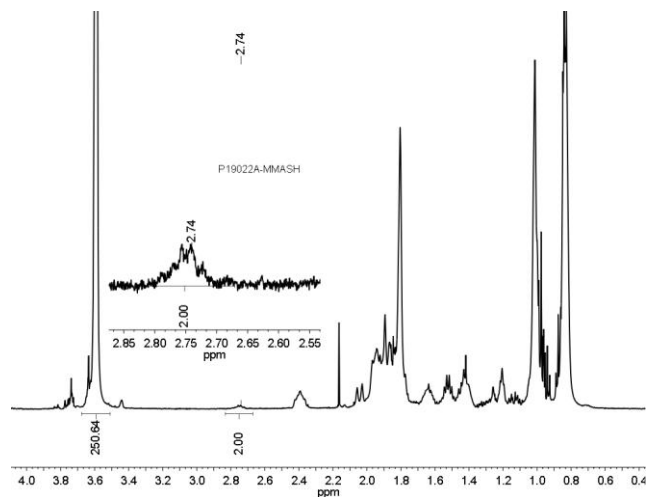
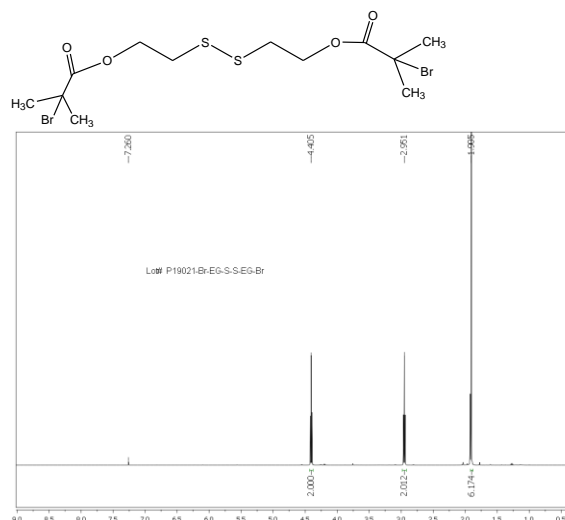
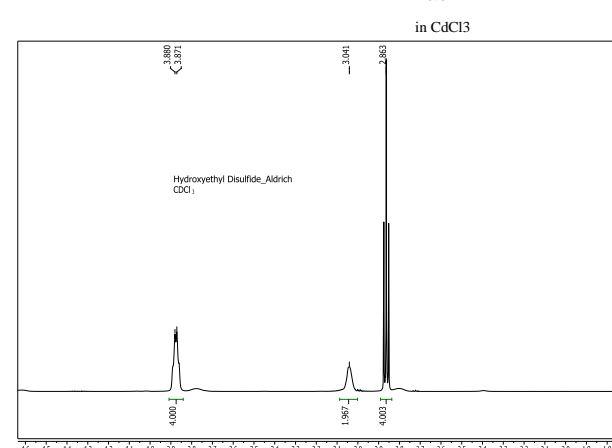
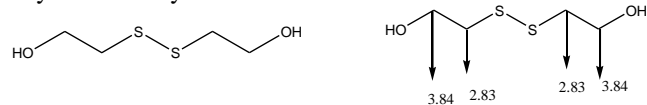
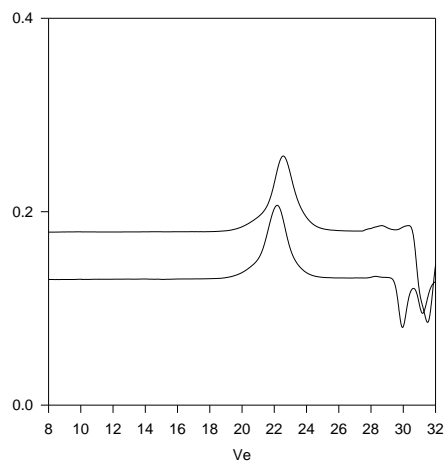
Mn x 10 ³	PDI
8.0	1.25
Syndio:hetero:iso ratio	55:40:5

Synthesis Procedure:

Prepared by ATRP process:

**Characterization:**

By SEC and by HNMR

**SEC of Sample:****P19022A-MMASH**

Size Exclusion Chromatography of Thiol end Poly(methyl methacrylate):

- Disulfide stage: M_n = 16,000, M_w = 20,000, M_w/M_n = 1.25
- After Cleavage of disulfide link: M_n 8,000, M_w 9,800 M_w/M_n 1.25

SH Functionality > 98%