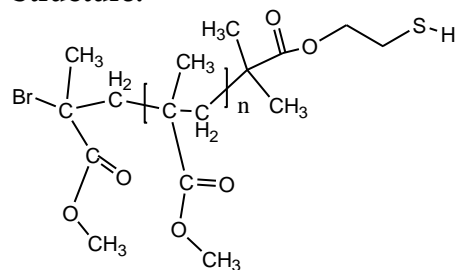
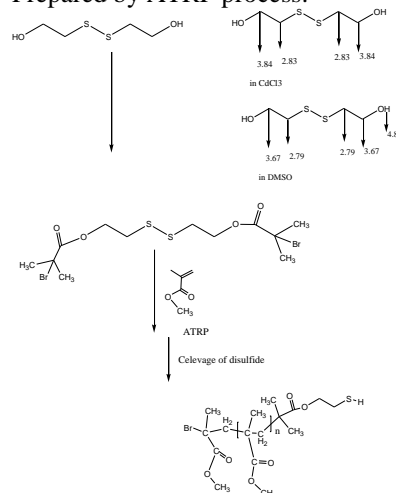


Sample Name:**Thiol Terminated Poly(methyl methacrylate)****Sample #: P19022D-MMASH****Structure:****Composition:**

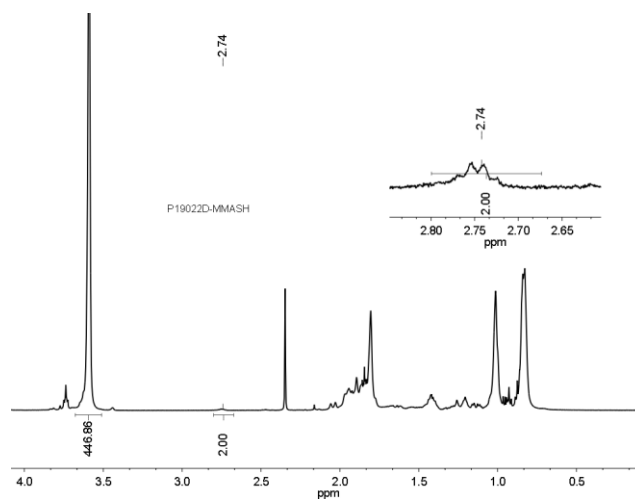
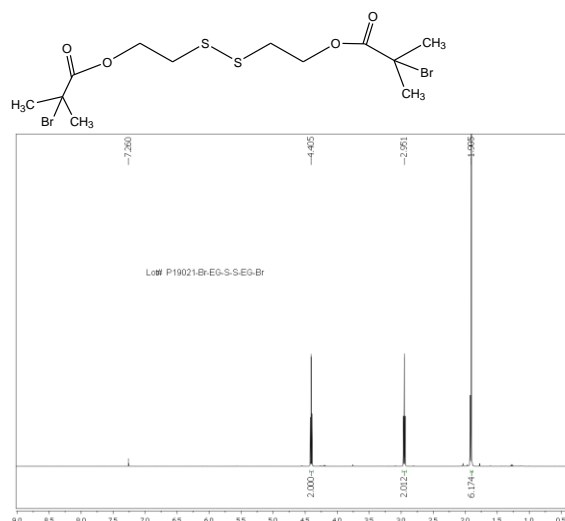
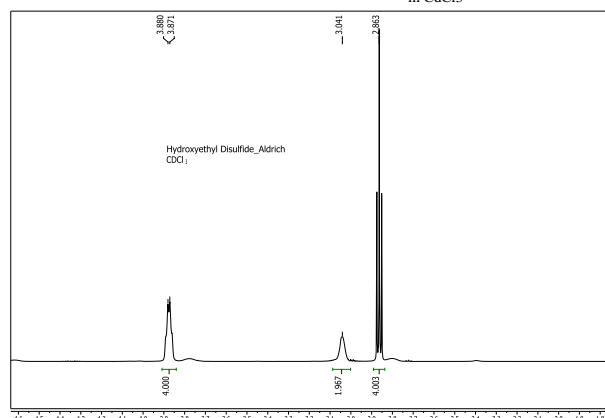
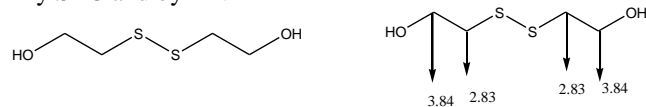
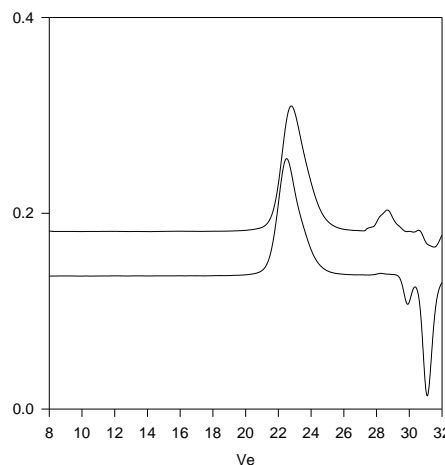
Mn x 10 ³	PDI
15.0	1.4
Syndio:hetero:iso ratio	55:40:5

Synthesis Procedure:

Prepared by ATRP process:

**Characterization:**

By SEC and by HNMR

**SEC of Sample:****P19022D-MMASH**

Size Exclusion Chromatography of Thiol end Poly(methyl methacrylate):

- Disulfide stage: $M_n = 30,000$, $M_w = 42,000$, $M_w/M_n = 1.4$
- After Cleavage of disulfide link: $M_n 15,000$, $M_w 21,000$, $M_w/M_n 1.4$

SH Functionality > 98%