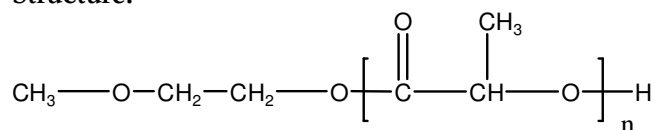


Sample Name: **POLYLACTIDE**

Sample #: **P19162-LA (DL-Form)**

Structure:

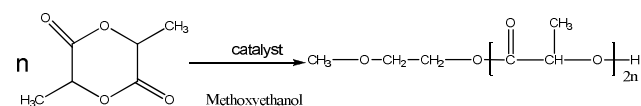


Composition:

Mn, g/mol	Mn, g/mol	Mw/Mn
96,000	129,500	1.35

Synthesis Procedure:

The polymerization of 3,6-dimethyl-1,4-dioxane-2,5-dione was carried out in bulk.



Purification:

The polymeric solution was precipitated from CHCl_3 and/or acetone into a large excess of ether.

Solubility:

Poly(DL-lactide) is soluble in toluene, THF, CHCl_3 and CH_2Cl_2 . The polymer is insoluble in methanol, hexane and ether.

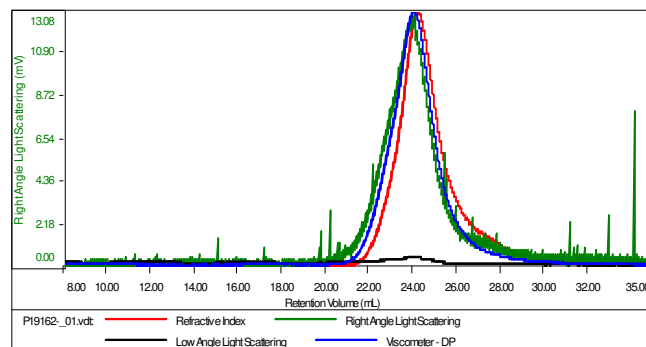
Characterization:

The molecular weight and polydispersity index (PDI) were obtained by size exclusion chromatography with a static light-scattering detector.

SEC of polylactide:

Sample ID: P19162-LA(DL form)

Concentration (mg/mL)	13.7353
Sample dn/dc (mL/g)	0.0450
Method File	PS80K-March6-2015-0000.vcm
Column Set	3x PL 1113-6300
Solvent	THF



Sample	MW Number Average (Da)	MW Weight Average (Da)	MW at Peak (Da)	Polydispersity	Intrinsic Viscosity (dL/g)
P19162_01.vcl	96,241	129,593	95,806	1.347	0.4914