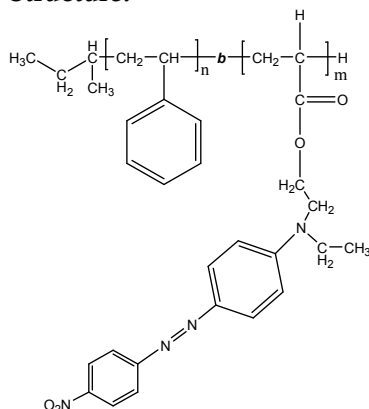


Sample Name: Poly (styrene-b- Disperse Red 1
Acrylate)
Sample #: P19263A-SDR1A

Structure:



Composition:

Mn x 10 ³ S-b-DR1A	PDI
18.5-b-14.0	1.04

Synthesis Procedure:

Proprietary procedure

Characterization:

Polymer was analyzed by size exclusion chromatography (SEC) to obtain the molecular weight and polydispersity index (PDI). The final block copolymer composition was calculated from ¹H-NMR. Copolymer Mw/Mn is determined by SEC.

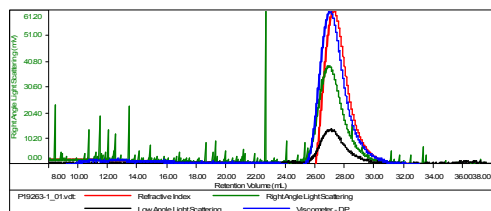
Solubility:

Polymer is soluble in THF, toluene, dioxane and CHCl₃.

SEC for the sample:

Sample ID:P19263-1

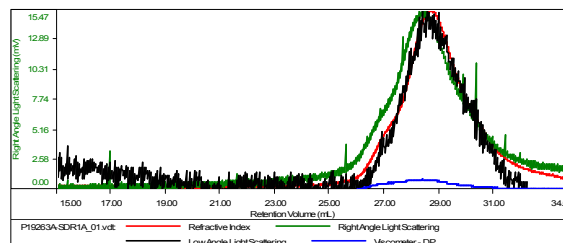
Concentration (mg/mL)	1.5659
Sample chdc: (mL/g)	0.1850
Method File	PS80K-April29-2015-0000.vcm
Column Set	3x PL 1113-6300
Solvent	THF



Sample	MW Number Average (Da)	MW Weight Average (Da)	MW at Peak (Da)	Polydispersity	Intrinsic Viscosity (dL/g)
P19263-1_01.vdt	18,557	20,584	18,670	1.109	0.5372

Sample ID:P19263-SDR1A

Concentration (mg/mL)	0.9808
Sample chdc: (mL/g)	0.1510
Method File	PS80K-April29-2015-0000.vcm
Column Set	3x PL 1113-6300
Solvent	THF



Sample	MW Number Average (Da)	MW Weight Average (Da)	MW at Peak (Da)	Polydispersity	Intrinsic Viscosity (dL/g)
P19263A-SDR1A_01.vdt	33,189	34,358	30,070	1.035	0.3748

¹H NMR for the polymer:

