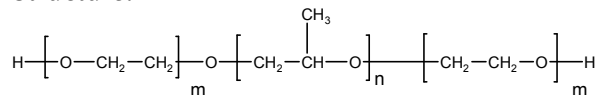


Sample Name:

Poly(ethylene oxide-b- propylene oxide -b- ethylene oxide) α - ω -dihydroxy terminal ends

Sample #: P19406-EOPOEO

Structure:

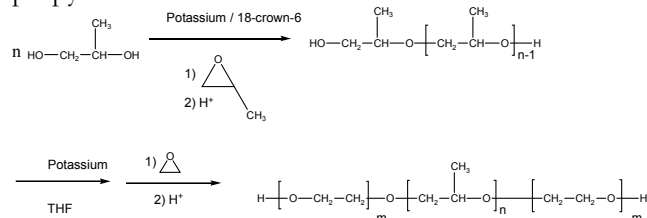


Composition:

Mn x 10 ³	PDI
4.8-b-4.0-b-4.8	1.18
Dp: 109-b-68-b-109	

Synthesis Procedure:

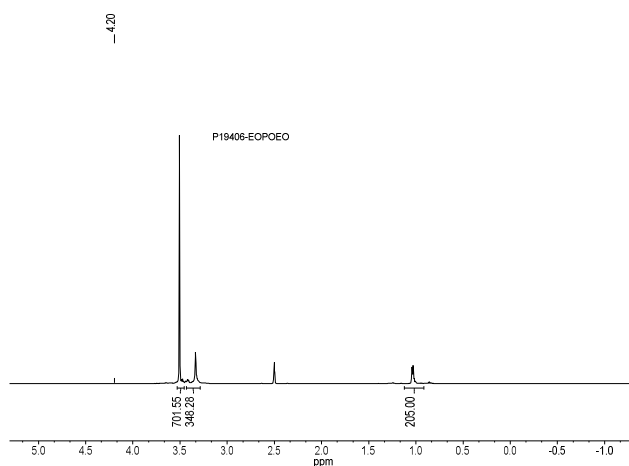
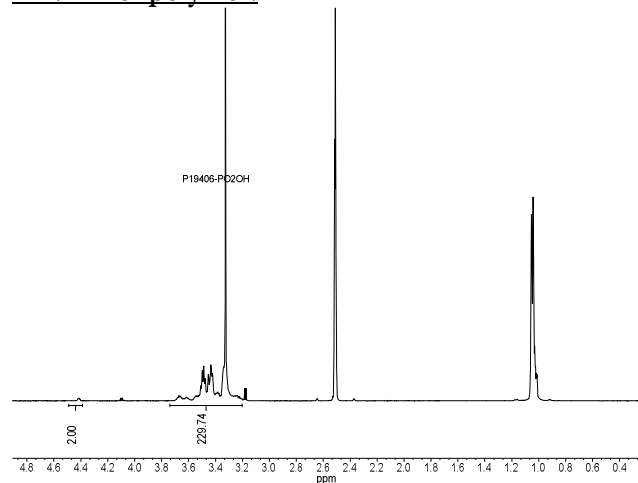
Poly(ethylene oxide-b- propylene oxide -b- ethylene oxide) is prepared by living anionic polymerization with sequence addition of monomer EO and propylene oxide.

**Characterization:**

BY SEC and HNMR analysis

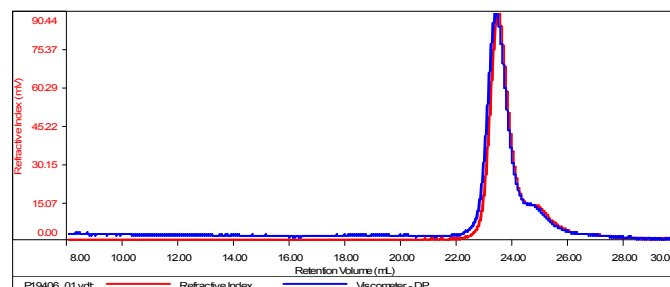
Solubility:

Polymer is soluble in THF, CHCl₃, and toluene.

HNMR of polymer:**SEC of Sample:**

Sample ID: P19406-EOPOEC

Concentration (mg/mL)	1.5392
Sample dn/dc (mL/g)	0.0480
Method File	PS80K-June30-2015-0000.vcm
Column Set	3x PL 1113-6300
Solvent	THF



Sample	MW Number Average (Da)	MW Weight Average (Da)	MW at Peak (Da)	Polydispersity	Intrinsic Viscosity (dL/g)
P19406_01.vclt	11,890	13,848	14,324	1.165	0.7802