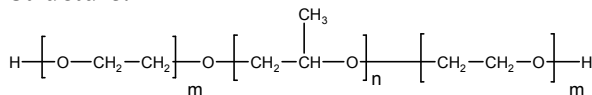


Sample Name:

Poly(ethylene oxide-b- propylene oxide -b- ethylene oxide) α - ω -dihydroxy terminal ends

Sample #: P19408-EOPOEO

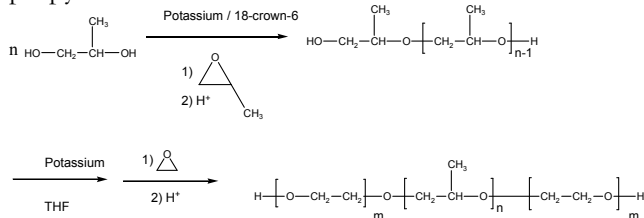
Structure:

**Composition:**

| | |
|----------------------|------|
| Mn x 10 ³ | PDI |
| 3.8-b-4.0-b-3.8 | 1.17 |
| Dp: 86-b-68-b-86 | |

Synthesis Procedure:

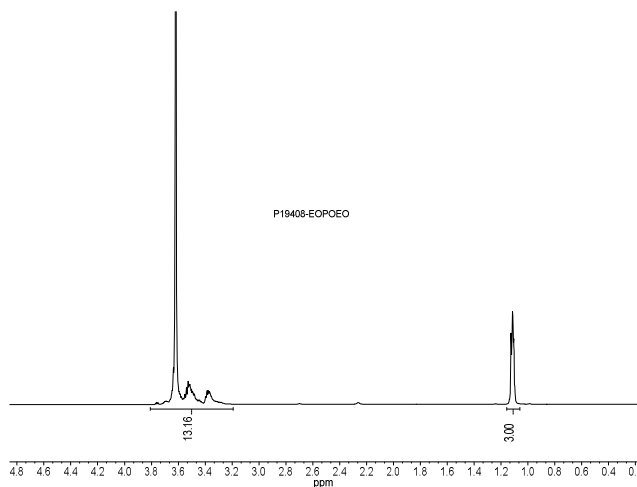
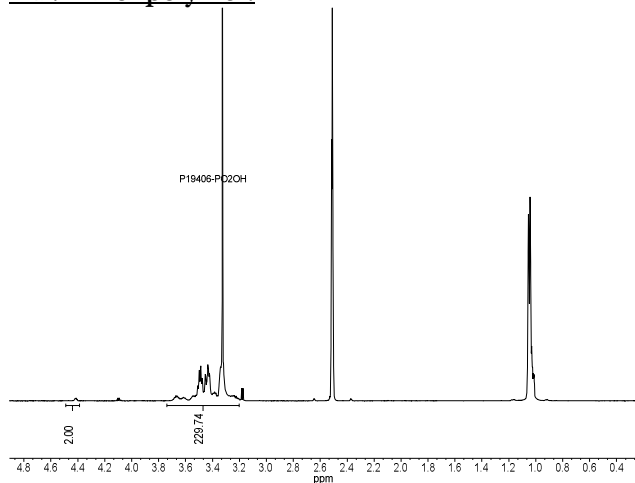
Poly(ethylene oxide-b- propylene oxide -b- ethylene oxide) is prepared by living anionic polymerization with sequence addition of monomer EO and propylene oxide.

**Characterization:**

BY SEC and HNMR analysis

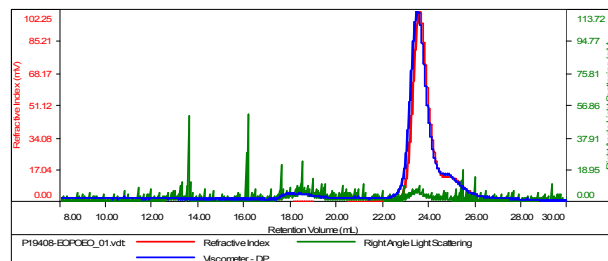
Solubility:

Polymer is soluble in THF, CHCl₃, and toluene.

HNMR of polymer:**SEC of Sample:**

Sample ID: P19408-EOPOEO

| | |
|-----------------------|----------------------------|
| Concentration (mg/mL) | 1.6166 |
| Sample conc (mL/g) | 0.0500 |
| Method File | PS80K-June30-2015-0000.vcm |
| Column Set | 3x PL 1113-6300 |
| Solvent | THF |



| Sample | MW Number Average (Da) | MW Weight Average (Da) | MW at Peak (Da) | Polydispersity | Intrinsic Viscosity (dL/g) |
|----------------------|------------------------|------------------------|-----------------|----------------|----------------------------|
| P19408-EOPOEO_01.vdt | 11,716 | 13,728 | 11,230 | 1.172 | 0.8216 |